

WINDOWS

Aloaha PDF Suite



Aloaha PDF Suite

© 2010 Wrocklage Intermedia GmbH

Aloaha PDF Suite

© 2010 Wrocklage Intermedia GmbH

All rights reserved. No parts of this work may be reproduced in any form or by any means - graphic, electronic, or mechanical, including photocopying, recording, taping, or information storage and retrieval systems - without the written permission of the publisher.

Products that are referred to in this document may be either trademarks and/or registered trademarks of the respective owners. The publisher and the author make no claim to these trademarks.

While every precaution has been taken in the preparation of this document, the publisher and the author assume no responsibility for errors or omissions, or for damages resulting from the use of information contained in this document or from the use of programs and source code that may accompany it. In no event shall the publisher and the author be liable for any loss of profit or any other commercial damage caused or alleged to have been caused directly or indirectly by this document.

Printed: Oktober 2010

Table of Contents

	Page
1 Introduction	5
1.1 Versions	7
1.2 Demoversion	7
2 Overview	8
3 Installation	11
3.1 Installation	11
3.2 Licence play in	15
4 Configuration	16
4.1 Configuration "PDF"	17
4.2 Configuration "Save"	18
4.3 Configuration "e-mail"	19
4.4 Configuration "Printer Settings"	20
4.5 Configuration "digital Signature"	21
4.6 Configuration "Signature settings"	23
4.7 Configuration "Attachments"	25
4.8 Configuration "licensing"	25
4.9 Configuration from master	26
4.10 Info	26
5 Usage	27
5.1 Note paper	30
5.2 PDF Scripting	32
5.3 Fitting of the page size	35
5.4 Tray menu	38
6 Digitally sign	39
6.1 Settings	41
6.2 Optical settings	43
6.3 Supported card readers	45
6.4 Supported Smart Cards	45
6.5 PDF signing	46
6.6 Signature check	48

7	Server mode	50
7.1	Configuration as Windows service	50
7.2	Tray menu	53
7.3	Automation command	55
7.4	Controlled folder	56
7.4.1	Dropmail folder	57
7.4.2	Autoprint folder	57
7.4.3	Tosign folder	58
7.5	Mass signature	60
7.6	CPU Priority set	61
7.7	Files sort	62
7.8	Registry2ini	63
7.9	Monitor all printers	64
7.10	Archive every printout as PDF	66
8	PDF Editor	67
9	Language.ini	68
10	FAQ	69
	Index	72

1 Introduction



With the Aloaha PDF Suite you can generate PDF documents very simply with every Windows application. She is very user-friendly, so that you must carry out no protracted user's trainings. The creation of your documents will maintain by the PDF creation. By encryption (40 or 128 bits) and digital signatures they can protect your documents against unauthorised changes and integrate them into digital right management systems (DRM).

After the printing from any application an input window appears which offers different choice possibilities, among other things: Encryption, digital legal administration or digital signature possibilities.

Functions of the PDF Creator



1

Create your PDF

Create your vector based, searchable PDF Files from every Windows application.



2

Add your letterhead

Place your letterhead behind your PDF-Files.



3

Sign your PDF

You can digitally sign your PDF Files Signature Interchange Standard compatible and Adobe.PPKMS compatible.



4

Mail your PDF

Send your PDF Files per E-Mail or per Fax

1.1 Versions

The Aloaha PDF Suite is available in 3 versions:

Aloaha PDF Suite Light

PDF design, letter sheet deposit, e-mail and saving

Aloaha PDF Suite Light - Freeware

PDF design, e-mail and saving. The freeware version allows no depositing of the notepaper.

Aloaha PDF Suite Pro

In addition to the functions of the Aloaha PDF suite Light files can be signed PDF electronically by software certificates and certified certificates of Smartcards.

Aloaha PDF Suite Server

In addition to the functions of the Aloaha PDF Suite Light and the Aloaha PDF Suite Pro you can use with the server version the functions of the Hotfolder. (e.g. mass signatures)

Aloaha PDF Suite Enterprise SDK

In addition to the functions of the Aloaha PDF Suite Light, the Aloaha PDF Suite Pro and the Aloaha PDF Suite server version developers can use many application programming interfaces to integrate the Aloaha PDF Suite into own applications.

1.2 Demoversion

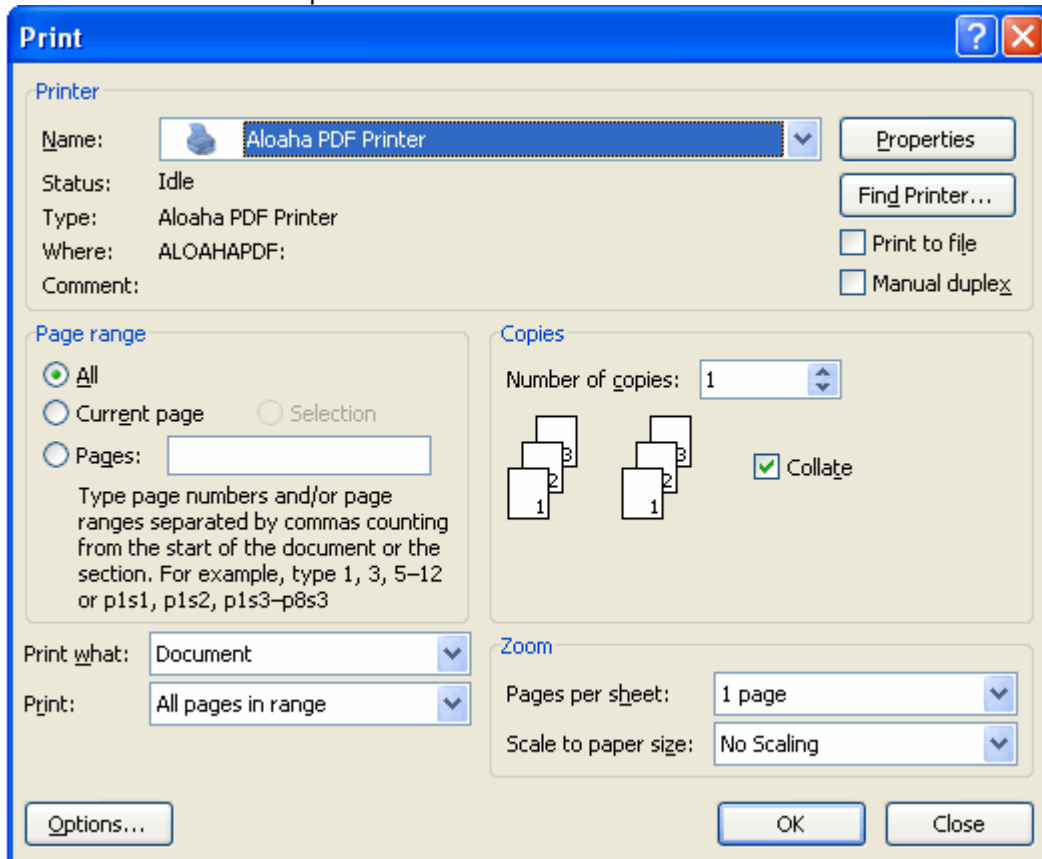
In the demo version all functions of the PDF Suite Server, Light, Pro and the SDK version are activated. To be able to use all functions you must request a licence key for the SDK version. If you order afterwards a licence key, make sure that the key the required functions activates.

2 Overview

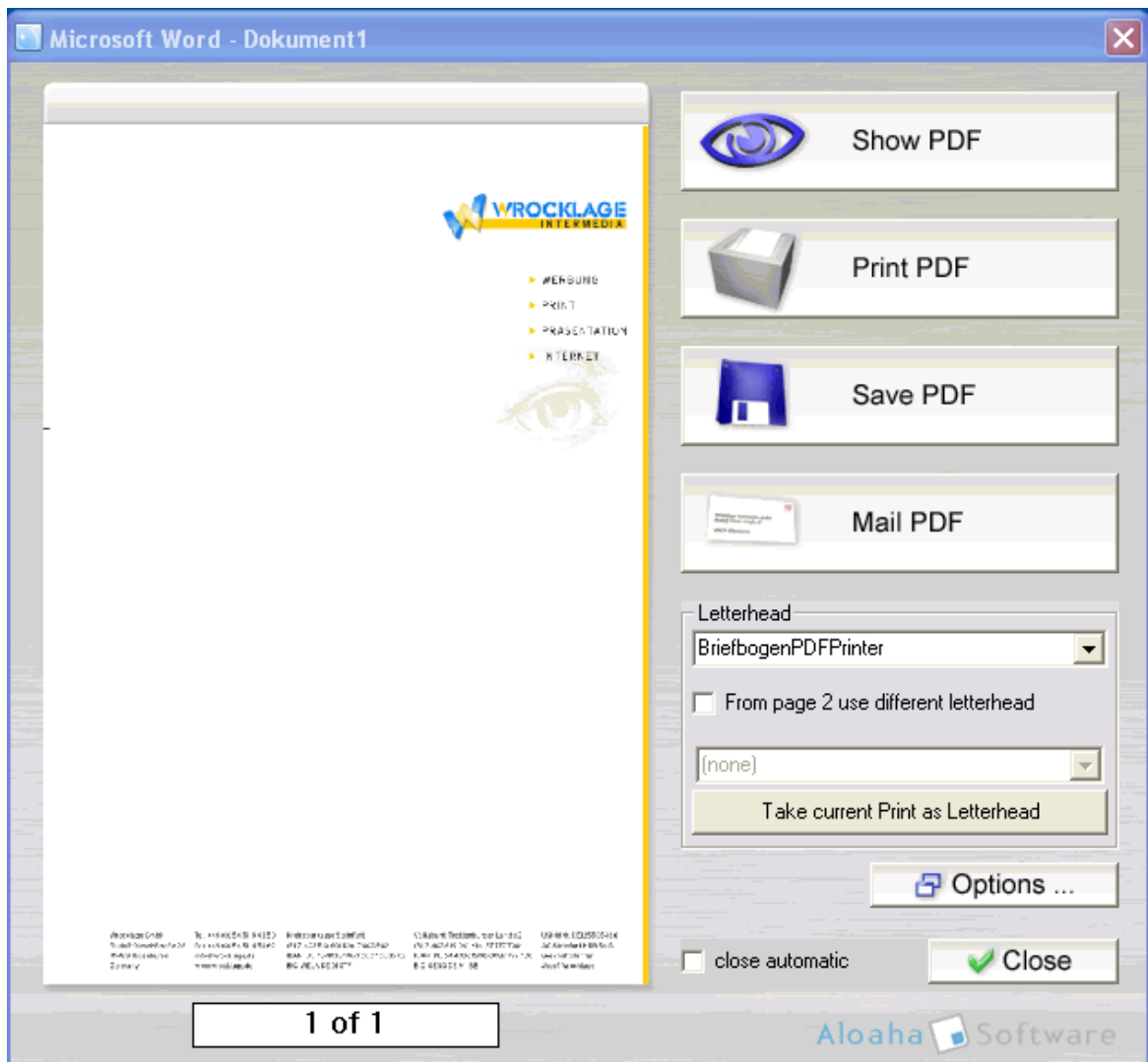
The Aloaha PDF suite needs no own printer driver to raise the operator convenience, nevertheless, an own PDF printer is laid out. With it you can generate from every document a PDF document.

Procedure:

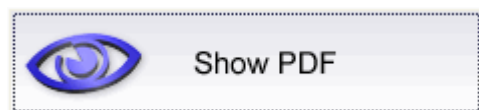
1. Open the document with the suitable program. (e.g. MS Word)
2. Launch the printing routine ("File > Print")
3. Select the Aloaha PDF printer.



4. With "OK" the printing process is launched; following window appears:



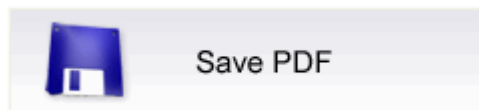
5. Fix what should happen with the generated PDF file:



The generated PDF document is opened in the Standard-PDF-Viewer (e.g. Adobe Reader)



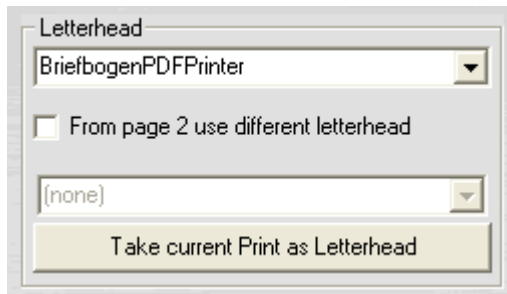
The PDF document is printed directly on a printer. With the right mouse button you can select available printers in the system.



Opens a dialog with which you can select the destination and a name for the generated PDF.



Opens the e-mail program and pastes the generated PDF as an attachment.



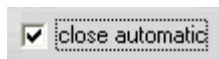
Select the letter sheet which should be used as a PDF template. If a letter sheet is selected you can choose "from page 2 use different letter sheet".



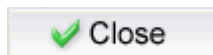
Takes over the shown printing on the left side and saves it as a letter sheet template.



Opens the dialog for the settings of the Aloaha to PDF Suite.



After the operation the dialog is automatically closed. If the field is empty, the dialog stays open and you can carry out other operations.



Closes the dialog.

3 Installation

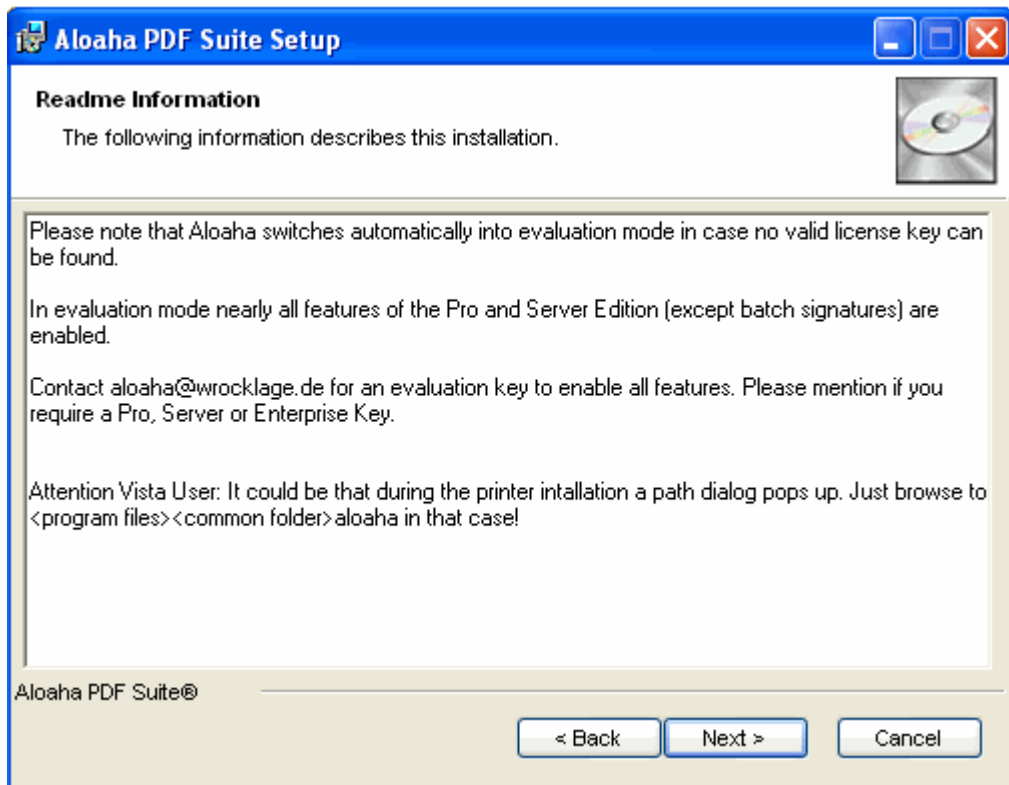
3.1 Installation

You can download the Aloaha PDF Suite to yourselves from http://www.aloaha.com/download/aloaha_pdf_de.zip.

Start Setup with double-click on "printer.exe"

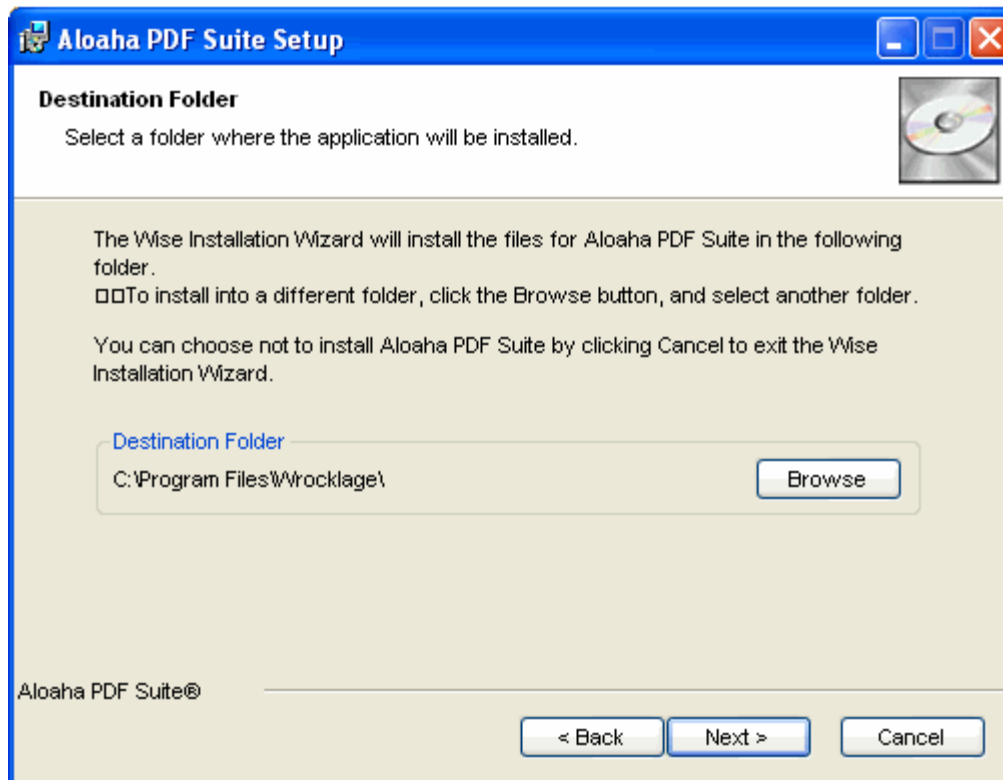


Read carefully these informations.



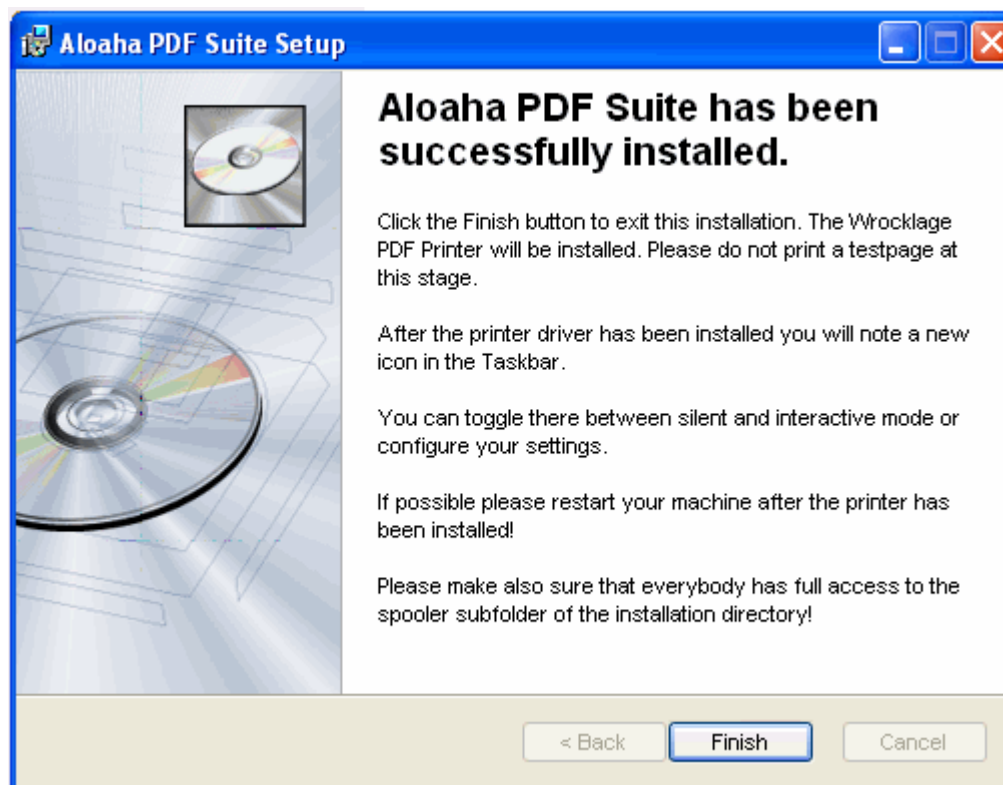
In the demo version all functions of the PDF Suite Server, Light, Pro and the SDK version are activated. To be able to use all functions you must request a licence key for the SDK version. If you order afterwards a licence key, make sure that the key the required functions activates.

Setup will ask you for the installation folder before it begins to install the product. For using a different folder, click the Browse button and select the folder you want to install to.



Note: It is suggested to install all Aloaha products in the same directory.

If setup has installed successful the application you have to click the finish button.



After the first installation the printer "Aloaha PDF printer" will be installed. Under Windows XP appear perhaps warning tips that the printer driver was not authorised by Microsoft. You can ignore them.

The Aloaha PDF suite does not need this special printer, it works also with other printer drivers. Only another default printer is installed.

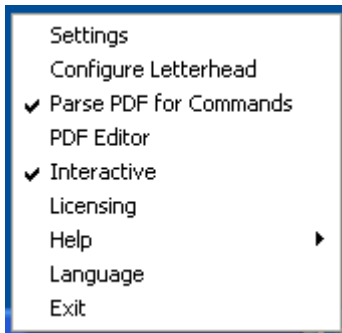
After these steps the Aloaha PDF Suite is automatically launched. If the Aloaha PDF Suite is active, you will an icon see in the task bar.



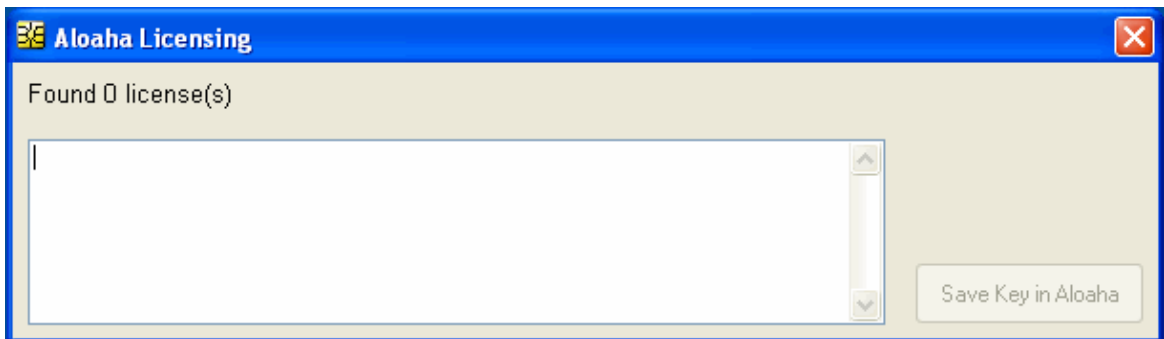
An item was created in the top menu. The Aloaha PDF Suite is automatically launched with the sign-on to the system.

3.2 Licence play in

If you order the Aloaha PDF Suite from us, you will receive an e-mail with a licence key.



In the Tray menu you call licensing. In the following dialog you enter the licence key and confirm with "Save Key in Aloaha".

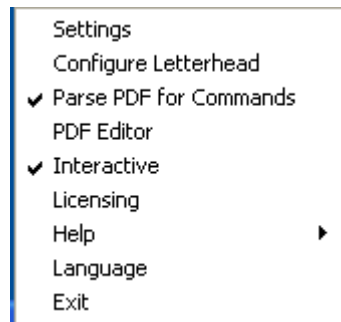


Afterwards you have to restart the program, so that the updates become effective.

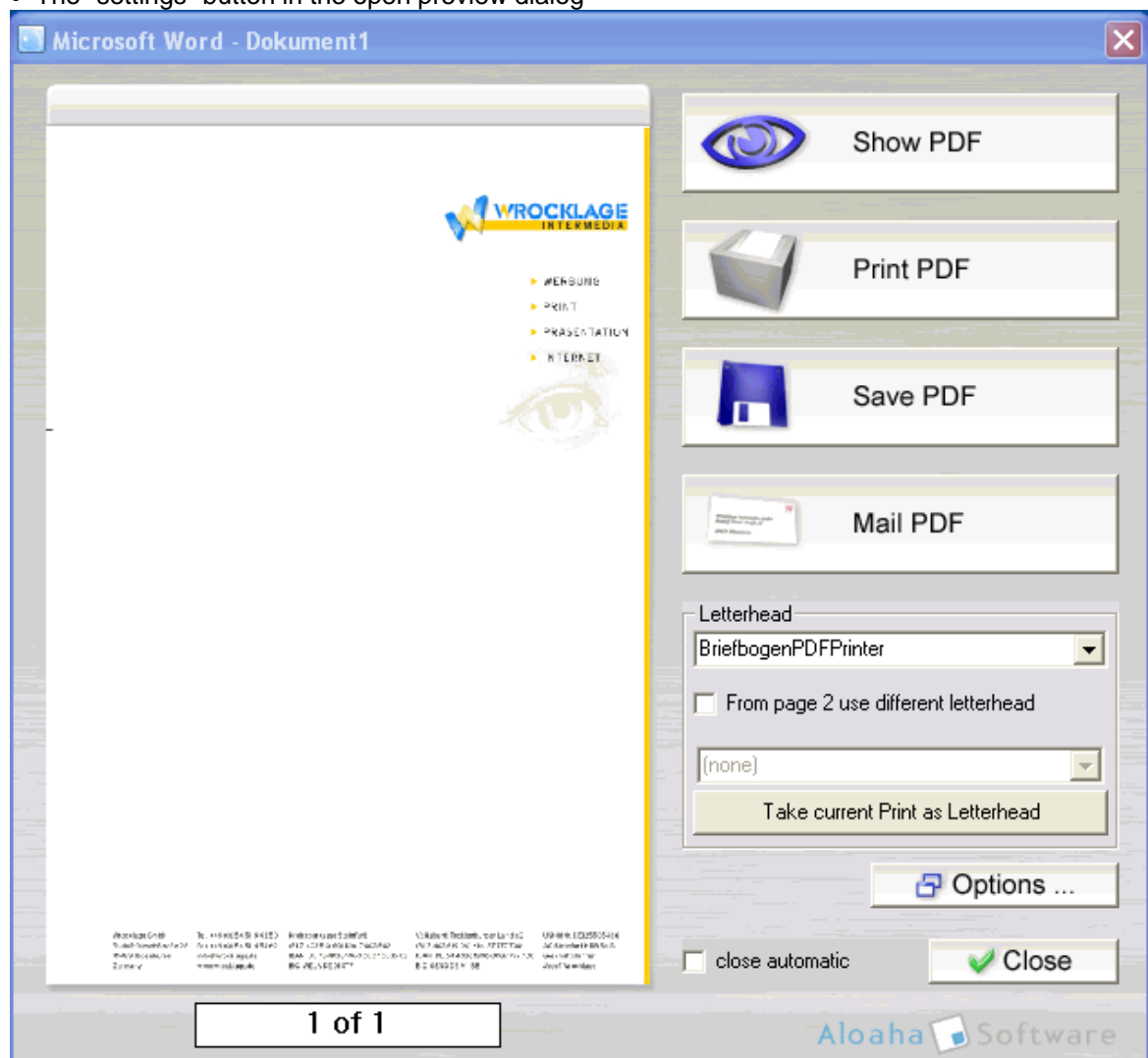
4 Configuration

There are two ways to get into the configuration menu.

- With the right mouse button on the Aloaha PDF suite icon and select "settings"

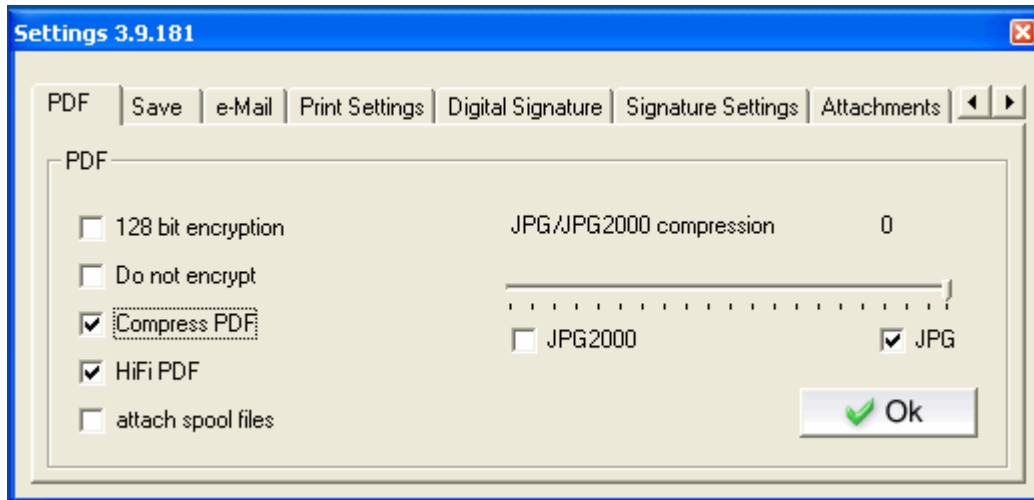


- The "settings" button in the open preview dialog



4.1 Configuration "PDF"

In the flag PDF you can set different options of the created PDF.



128 Bit Encryption

The text of the created PDF file is encrypted. Then this text may not to be browsed any more with text tools or cannot be read any more by Google.

Do not encrypt

The PDF file will not be encrypted. It can be browsed and read by Google at any time.

compressed PDF

Single elements of the PDF document (pictures, drawings, etc.) are compressed to save storage space.

HiFi PDF

is a function which checks between quick printing and the compatibility of different printing modes to the PDF and selects the suitable printing mode. If necessary you test which setting is suitable best for your interests. There exist two different change kinds.

Attach spool files

The PDF format offers the possibility to embed every kind of files directly in PDF. If this check mark is activated, the original Spoolfiles are embedded in the PDF. This can be used for archive purposes. Moreover we also offer support.

JPEG 2000

If this option is activated, the pictures are summarised into the PDF document with JPG 2000 compression. This format offers an extremely high compression. As soon as this option is selected, a regulator with which you can select the high-class step is shown.



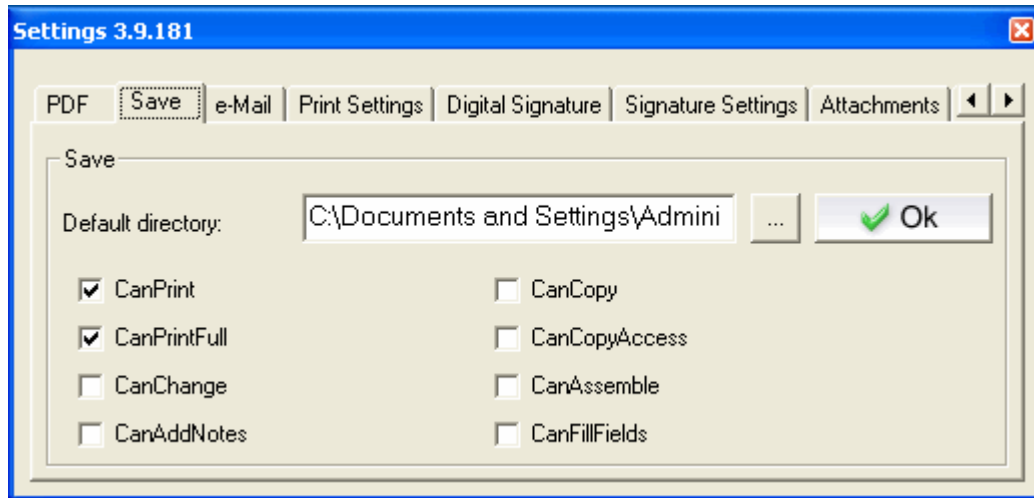
JPG

The pictures are compressed in the PDF with the format JPG. As soon as this option is selected, a regulator with which you can select the high-class step is shown.




4.2 Configuration "Save"

In the flag "Save" you can select different memory options.



Default directory

Here you can fix the path under which the generated PDF files are normally saved.

By click on  a file dialog about which you can select the destination folder is shown. Within the scope of the document security you have the possibility to put different rights or restrictions for the generated files.

CanPrint

Generated PDF files may be printed out on all printers.

CanPrintFull

Files with high quality (e.g., printing PDF) may be printed out.

CanChange

With Aloaha PDF Suite generated files may be changed. (e.g., with Adobe Acrobat)

CanAddNotes

Adding and saving of comments in generated PDF files is allowed

CanCopy

Contents like texts or pictures within the generated PDF files can be copied in accordance with the document.

CanCopyAccess

Other programmes may take the contents of the file. (e.g., language software like Microsoft Voice may read out the contents to read out.)

CanAssemble

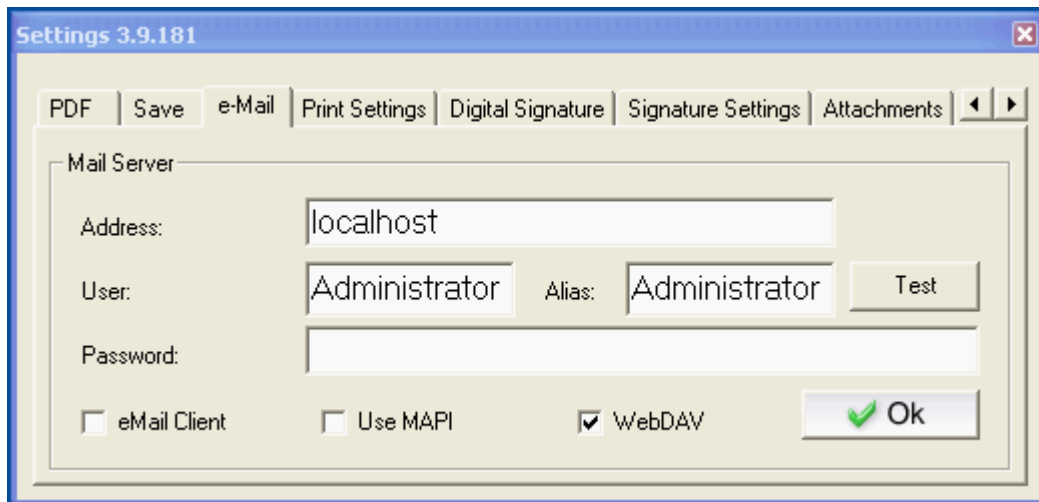
Restructure of the generated PDF files is possible. (e.g., to appendices or exchanging of whole pages)

CanFillFields

Fields in generated PDF files may be filled

4.3 Configuration "e-mail"

In the flag e-mail settings you can give the data for the dispatch the PDF about your mail server or your client.



If none of the check marks "eMail client", "Use MAPI" or "WebDAV" are activated, the dispatch about a SMTP server is finished. In addition you put down under postal exit server the IP or the names of the mail server, e.g., mail.beispiel.de. Under port you enter the SMTP port. According to Internet standard this is port 25. Under username and password you enter your mail servers committed provider access data.

Beware! The E-mail is dispatched directly and cannot be customised over again. You should use this option only in connection with the PDF Scripting.

E-Mail Client

If this option is used, a window is opened about the standard message client (e.g., Outlook express) and here the PDF superimposed. Should this not function, you can attach if necessary with the keyboard shortcut STRG + V the desired document. The entered access data are not required here.

Use MAPI

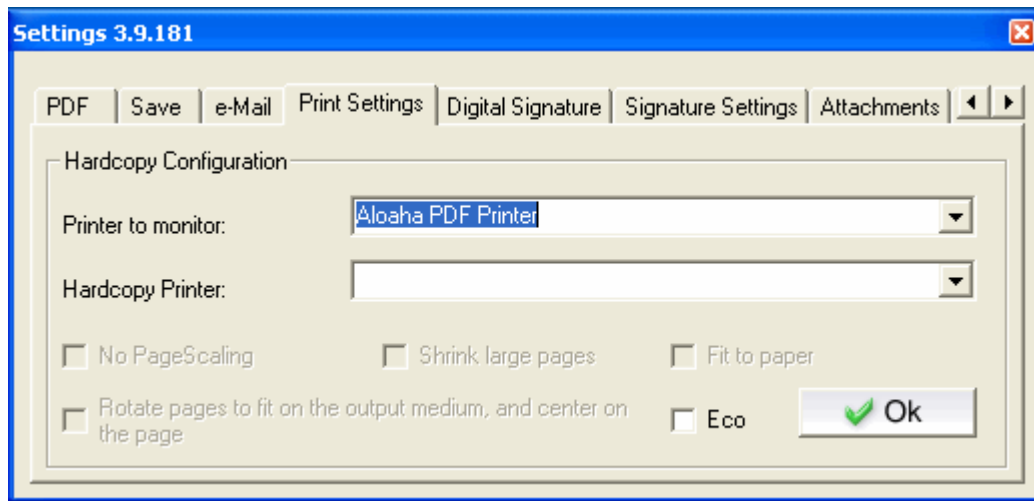
On this occasion, Microsoft Outlook is used and an e-mail window is opened, with the PDF as an attachment. The entered access data are not required here.

WebDAV

With WebDAV an e-mail about Microsoft Exchange or other WebDAV server is dispatched under use of the entered access data.

Beware! The E-mail is dispatched directly and cannot be customised over again. You should use this option only in connection with the PDF Scripting. The sent message appears under "sent objects" in your Outlook.

4.4 Configuration "Printer Settings"



Printer to monitor

In the pulldown menu you can select the printer to be monitored by Aloaha

Hardcopy Printer

In the pulldown menu you can select to which of your installed printers Aloaha as a default printer for the function "PDF print" should use.

No PageScaling

The upper left range of a page is printed without scaling. Pages or selected ranges which do not fit on the paper are cut.

Shrink large pages

Reduces the single pages to customise them to the picture range (or printable range) of the paper format selected currently. The picture range of the paper is fixed by the printer driver.

Fit to paper

Enlarges the single pages to customise them to the picture range (or printable range) of the paper format selected currently. The picture range of the paper is fixed by the printer driver.

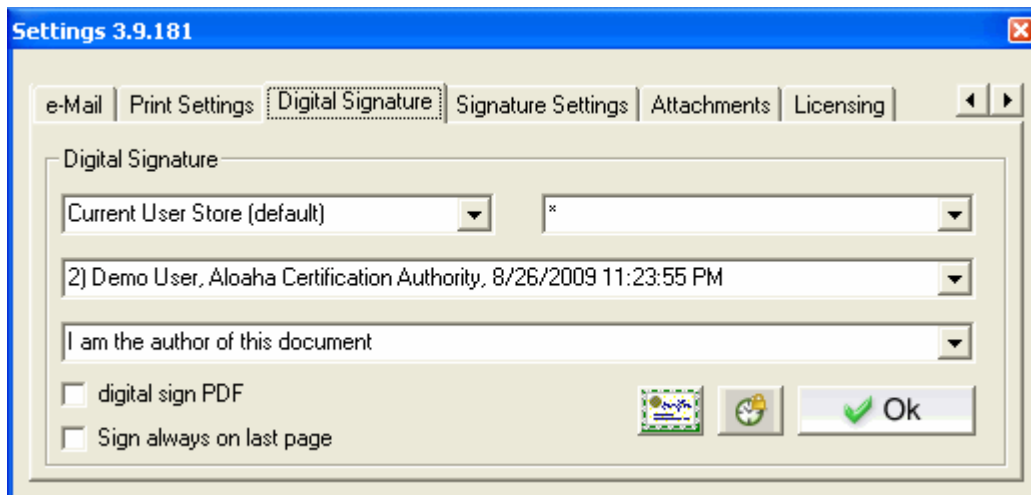
Rotate pages to fit on the output medium and center on the page

Adjusts the alignment of the PDF document to the agreed alignment in the printer settings and centres the page in the picture range.

Eco

If you select the Eco mode, the information is transmitted directly to the printer and is handled with the printout economically with toner / ink.

4.5 Configuration "digital Signature"



1. Certificate source

Here you can select between different kinds of the certificates which you would like to use for signing of your PDF files.

Options:

- **Computer certificates**
All certificates which are associated in Windows certificate store to the computer are indicated in the certificate-choice list.
- **User certificates (standard)**
All certificates which are associated in Windows certificate store to the actual user are indicated in the certificate-choice list.
- **Active Directory certificates**
All certificates which are available in the Active Directory are indicated in the certificate-choice list.
- **SmartCard (e-ID)**
All connected card readers are indicated in the certificate-choice list.

2. Certificate Filter

Here you can filter the certificate list of the indicated certificates after special certificate attributes.

3. Certificate select

This menu depends on the certificate source. If you select "user's certificate", you will receive in this field a listing of all user's certificates on your PC and can select there the corresponding one. If you select the SmartCard (e-ID) option, a listing of all installed SmartCard readers on your computer appears in this menu. The Aloaha PDF Suite recognises automatically the Smart-Card inserted in the card reader and can read the certificates of supported cards.

4. Purpose of the signature

This field appears only if the check box "digital sign PDF" is activated. Here you can select from several signatures which should be automatically used.

Options:

- I am the author of this document
- I sign this document
- I agree to this document
- I have seen this document
- I have got this document

5. Sign digitally



If this check box is activated, every PDF file is automatically signed with the Aloaha PDF Suite.

6. Sign always on last page

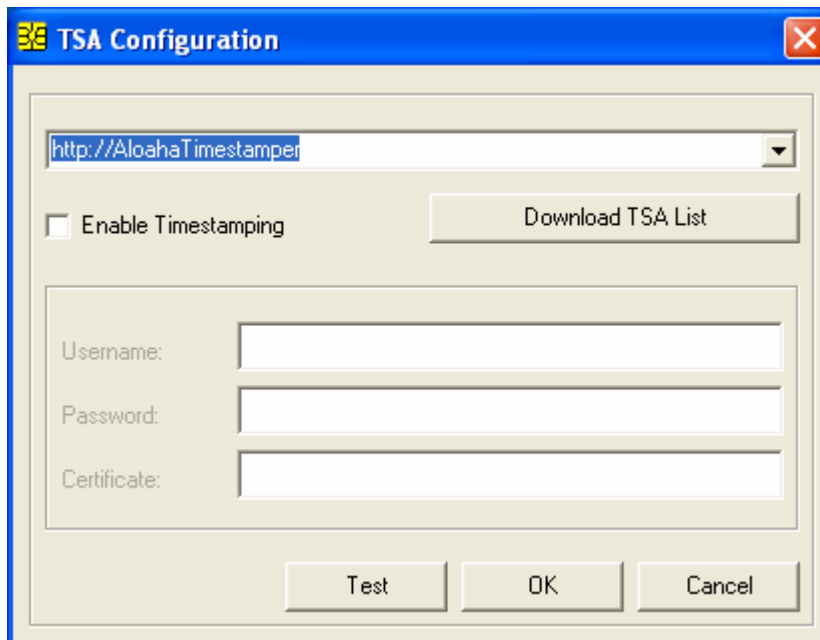
means that the signature of a multilateral document is always placed on the last page.

7. Certificate import

With this button you can import PFX files in Windows certificate memory.

8. Settings for the time stamp

If you click on the watch icon another window opens:



Here you can customise the settings for the integrated RFC 3161 compatible time stamp client.

In the upper field you select the time stamp server. If the field is empty, you can download the list of the possible time stamp servers from the Aloaha Website.

If you select `http://AloahaTimestamp...`, the PDF suite integrated TimeStamp server is used. On this occasion, the local system time is taken as a basis for the time stamp.

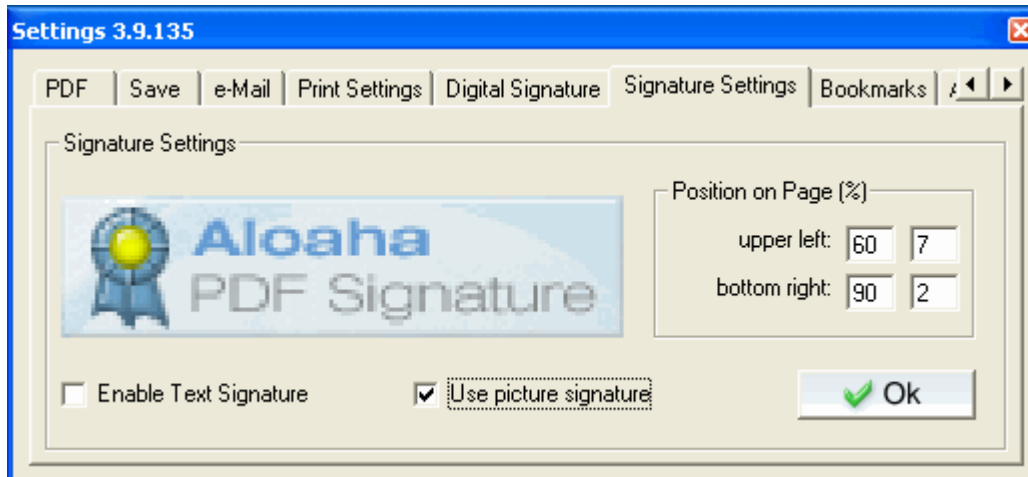
In user data you configure the access data to the time stamp service.

4.6 Configuration "Signature settings"

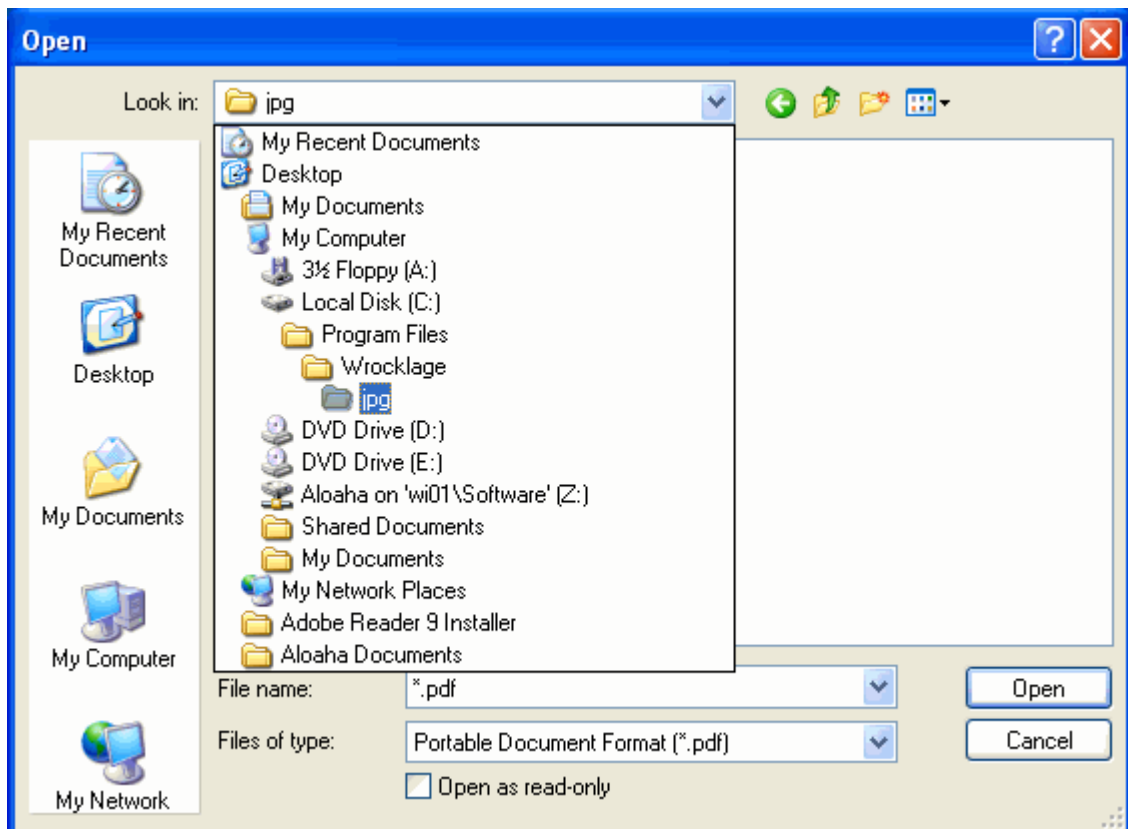
In this dialogue you configure the optical representation of the signature in a PDF.
Options:

Activate picture signature

If this option is selected, a picture is used in the PDF. **By click on the announcement of the topical signature picture you can load own images. This picture must be in the format JPG.**

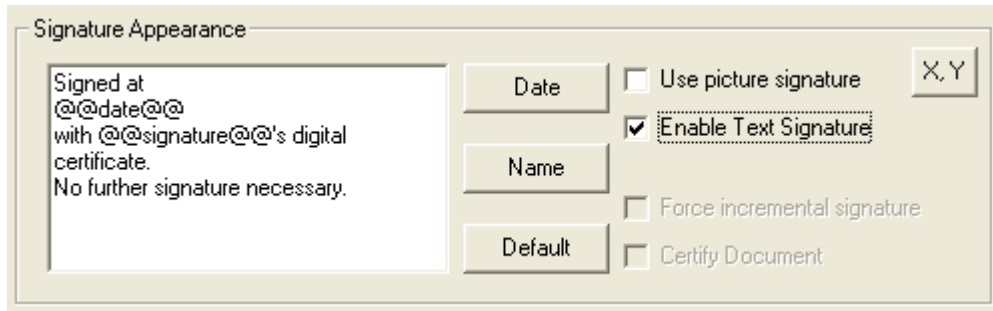


- If you click in the "signature settings" on the signature, the directory in which during the installation all signature pictures are moved opens and you can exchange if necessary actual for another signature.



Activate text Signature

If this option is selected, text will appear in the PDF file. You have the possibility to paste a placeholder for date and name in the actual cursor position by click on "date" and "name". The placeholder will be replaced during the signature process with the actual date and the name of the certificate owner.

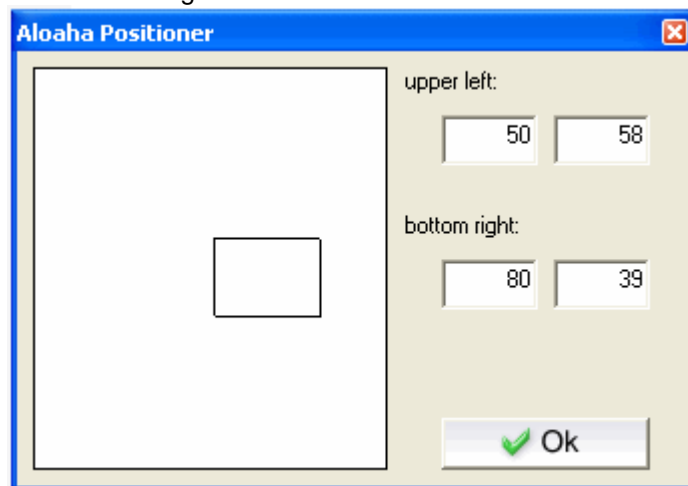


Position of the signature

In the fields you give the position of the signature. On this occasion, it is calculated in % of the page size.

Special feature:

- If you click with the right mouse button in the field "Position in % of the page size", Aloaha opens the Positioner and you can determine with of the right and left mouse button the position and size of the signature field.

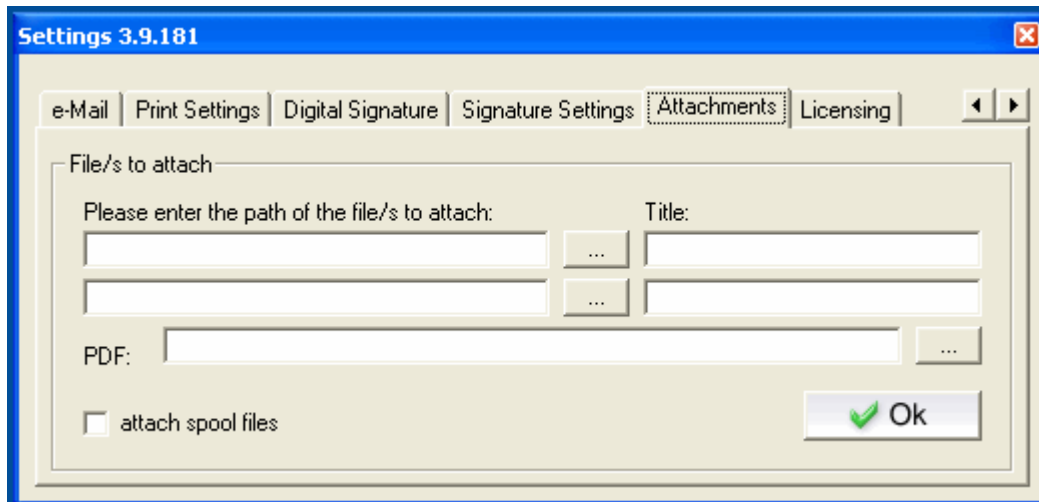


4.7 Configuration "Attachments"

The PDF file format offers the widely unknown possibility to embed files in a PDF file. These attachments can be called in the Adobe Reader and be saved. By click on the button "..." you select a file to embed.

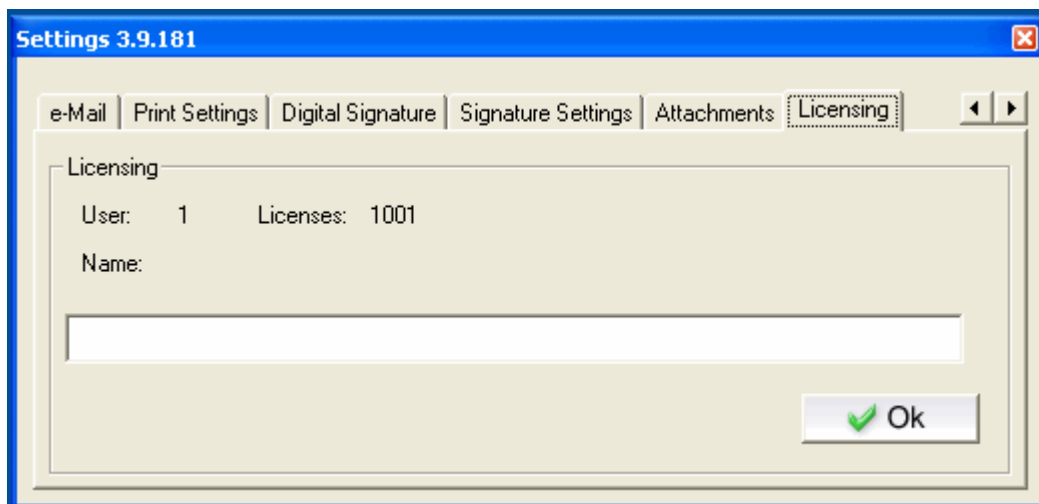
Alternatively you can drag with opened preview-window also files from the Windows explorer in the dialog.

You also can attach spool files.



4.8 Configuration "licensing"

In this document the licensing information is shown. You can see the at most possible users and also the currently used licences.



4.9 Configuration from master

Sometimes it is very important that all Aloaha user in big companies work with the same settings and reduce therefore also the administrative amount of work.

If updates are removed again as soon as a user cancels his system, no danger exists on having wrong set versions of the software.

The mechanism which the Aloaha PDF Suite uses is very easy. As one of the first operations during the system start following registration keys are requested:

HKLM\SOFTWARE\Aloaha\AutoRegistryImport

and

HKCU\SOFTWARE\Aloaha\AutoRegistryImport

These keys can contain the path to a Registry file (*.reg). As soon as the path entry is composed and the file exists, the Aloaha PDF suite imports them into the registration.

To generate a setting template, log in as "user X" and export HKCU\SOFTWARE\Aloaha\ in a file. Edit this file to delete all entries which are insignificant or should not be removed by every system start.

Then you enter the path to this file on following key:

HKLM\SOFTWARE\Aloaha\AutoRegistryImport

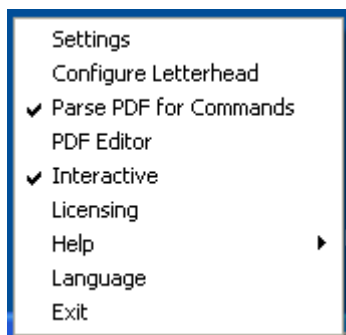
With it your template is imported by every start by Aloaha in the registration.

4.10 Info

Some settings can be changed directly in the info range.



Click for the menu with the right mouse button on the icon in the info range.



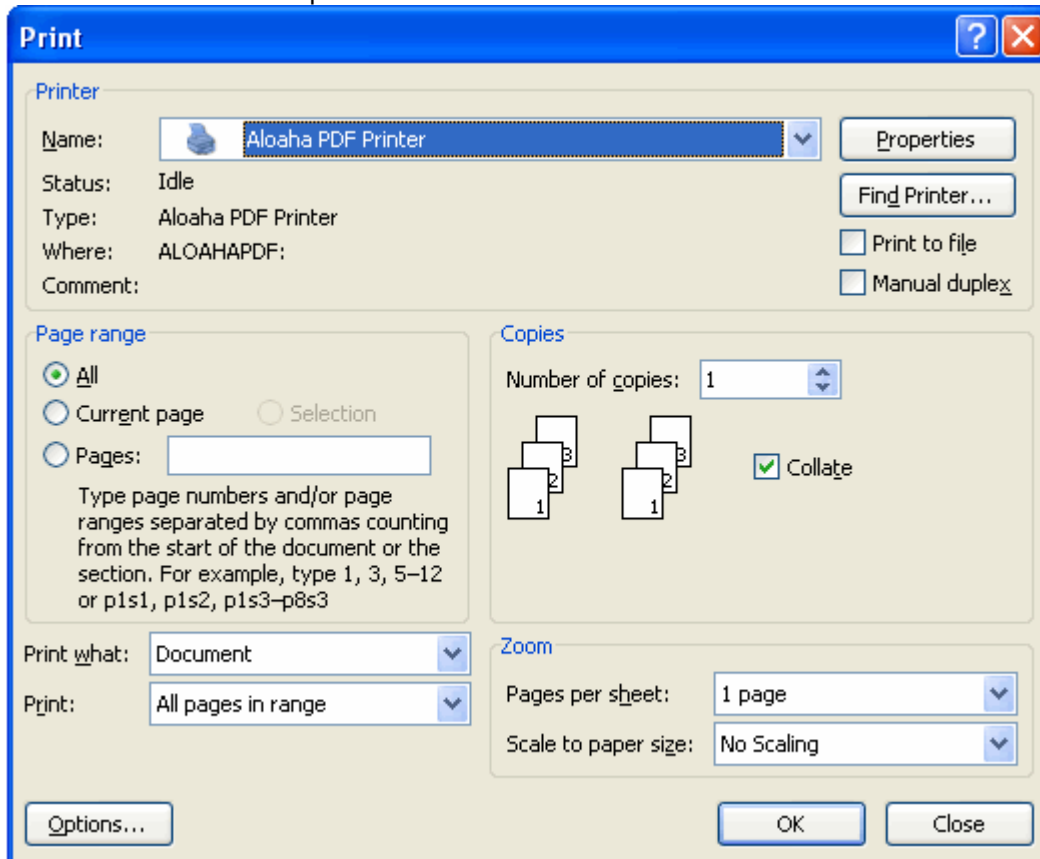
- With "**Settings**" you reach the configuration menu.
- With "**Configure Letterhead**" you reach the dialog for the administration of letter pages.
- With click on "**Parse PDF for Commands**" you activate the search for script instructions (see Scripting). This slows down the creation of PDF files.
- With "**PDF Editor**" you launch the provided PDF editor (see PDF editor).
- With "**Interactive**" you switch between normal mode and the server mode (see server mode)
- With "**Licensing**" you receive information about the number of unlimited licences and enter the licence sent by us.
- With "**Help**" you receive access on to the "**Online Help**" and the "**Online Forum**" in the Internet.
- With "**Language**" you can change the actual language. Afterwards you must restart the program.
- You quit the program with "**EXIT**".

5 Usage

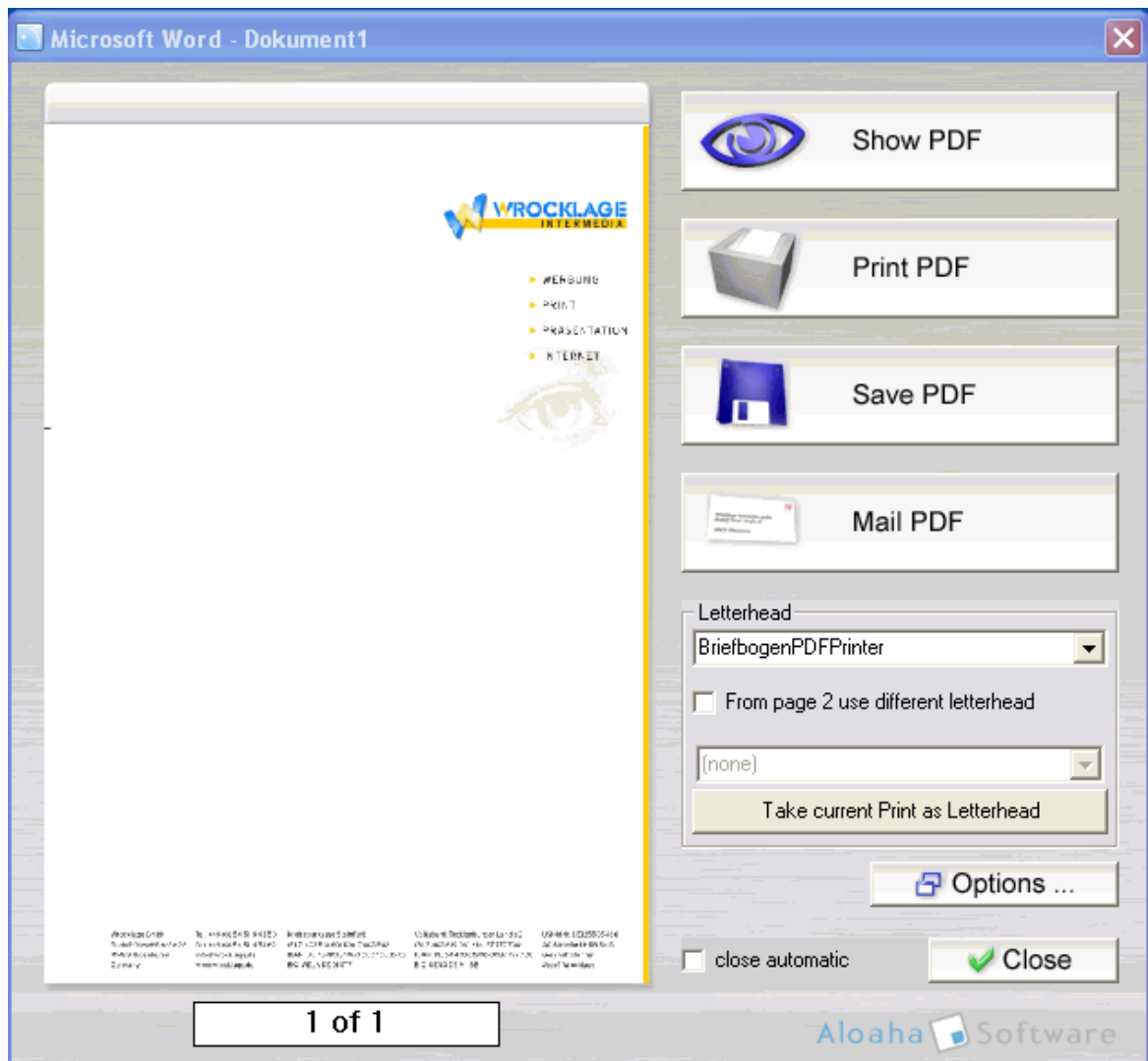
The Aloaha PDF suite needs no own printer driver to raise the operator convenience, nevertheless, an own PDF printer is laid out. With it you can generate from every document a PDF document.

Procedure:

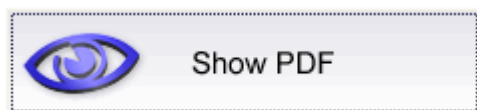
1. Open the document with the suitable program. (e.g. MS Word)
2. Launch the printing routine ("File > Print")
3. Select the Aloaha PDF printer.



4. With "OK" the printing process is launched; following window appears:



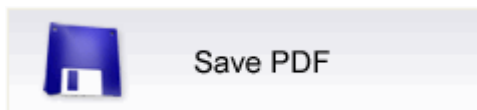
5. Fix what should happen with the generated PDF file:



The generated PDF document is opened in the Standard-PDF-Viewer (e.g. Adobe Reader)



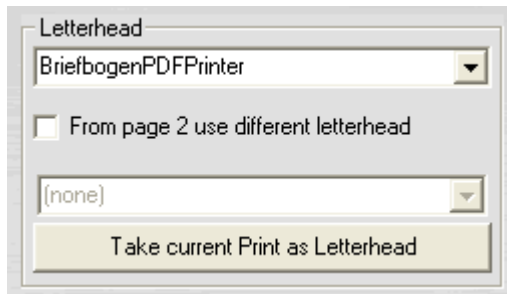
The PDF document is printed directly on a printer. With the right mouse button you can select available printers in the system.



Opens a dialog with which you can select the destination and a name for the generated PDF.



Opens the e-mail program and pastes the generated PDF as an attachment.



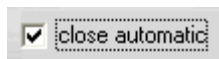
Select the letter sheet which should be used as a PDF template. If a letter sheet is selected you can choose "from page 2 use different letter sheet".



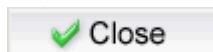
Takes over the shown printing on the left side and saves it as a letter sheet template.



Opens the dialog for the settings of the Aloaha to PDF Suite.



After the operation the dialog is automatically closed. If the field is empty, the dialog stays open and you can carry out other operations.

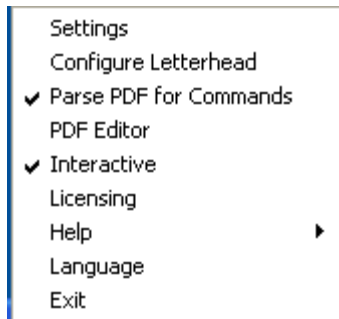


Closes the dialog.

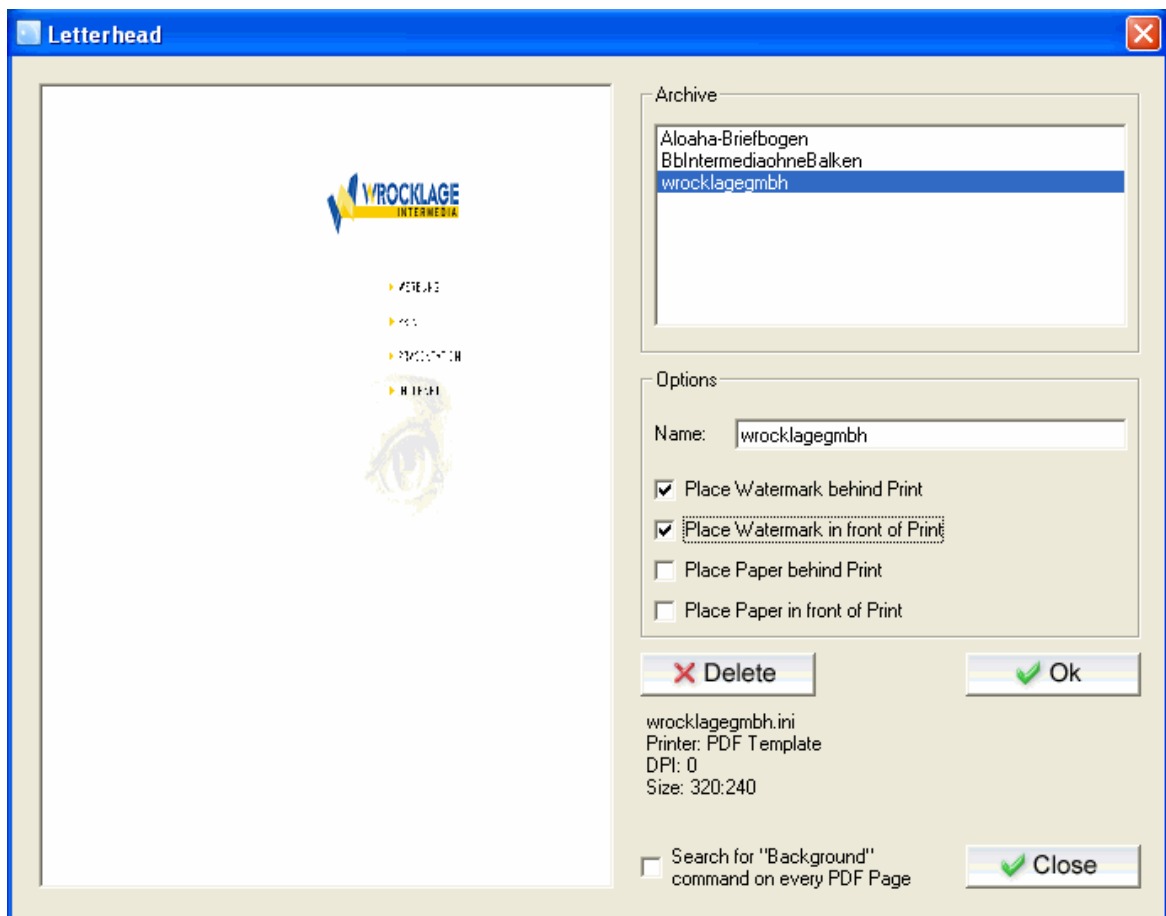
5.1 Note paper

The Aloaha PDF Suite offers the possibility to deposit a letter sheet behind every generated PDF. You import the letter sheets, while you either with a printing in the preview dialog on "actual printing as a letter sheet take over" click or take over existing PDF files.

You select this about the system menu the item "Configure writing paper".



Then the letter sheet dialog opens.

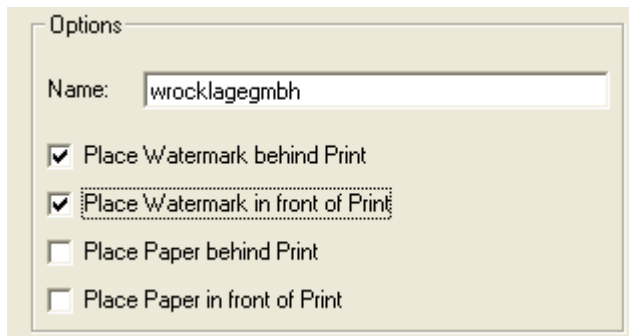


To import an already existing letter sheet, drag a PDF file from Windows explorer in the letter sheet dialog.

In the select list on the top right you find all available letter sheets. The letter sheets from this list are offered in the preview dialog with the design of a PDF file.

If a letter sheet is selected, you can change the name.

Options



Options

Name: wrocklagegmbh

☒ Place Watermark behind Print

☒ Place Watermark in front of Print

☐ Place Paper behind Print

☐ Place Paper in front of Print

Place watermarks before or behind the printing

If you have taken over a letter sheet from the Aloha PDF Suite preview dialog, you can select whether the letter sheet should be laid as a watermark before or behind the printing. For example, stamps can be laid like "Blueprint" or "Confidentially" before text.

Under "beginning with letterhead on this page" you can select for this letter sheet that it is used only from page X. Therefore you can use different note paper for different pages within a document.

The option "Use letter sheet for Autoprint" is explained under the descriptions to the Aloha PDF Suite server version.

The option "Search for background command" is explained under PDF Scripting.

5.2 PDF Scripting

Simply and actually: We developed the Aloaha PDF Suite Scripting to control different operations with commands in the original document. Commands which appear in white character font in the original, do not appear in the PDF and in the printout. These commands are applicable for different ranges, e.g. reports from the merchandise management.

E-Mail address

The Aloaha PDF Suite automatically filters e-mail addresses from the original document. If you click in the preview dialog on PDF e-mailing, the accordingly configured mail program with the e-mail address found in the original document is called.

E-Mail-Subject

If you enter in your origin document the command

Subject: <mein Betreff>

the subject is also pre-adjusted in the e-mail program.

E-mail text

To pre-adjust a text of e-mail you enter one of the following commands in your original document:

body: <mein Bodytext>

This command is suited only for short texts. Should you need longer texts, you can use one of the following commands (example files):

htmlpath: c:\auftrag\rechnung.html und textpath:
c:\auftrag\auftragsbestätigung.txt

The contents of these files is used as an e-mail text.

EmlPath

Emlpath loads a complete message and fills htmlbody and textbody automatically.

Attachments

To give a filename to the automatically attached PDF, use the command

pdfname: AB12334.PDF

To add another PDF as an attachment, use

AttachmentPDF: c:\Auftrag\agb.pdf

This PDF is in addition attached in the message.

Mailto line

You can fix the receivers of the generated PDF document.

Note that you need one command per receiver. It is possible to integrate the indicated name of the receiver. Several lines with mailto commands per document are supported.

Examples:

eMailTo: Stefan@aloaha.com

eMailTo: "Stefan" Stefan@aloaha.com

eMailTo: "support" <support@aloaha.com>

[SMTP:stefan@aloaha.com]and[FAX:0815]

(important if you like to connect Aloaha with native FAX Connectors as for example GFI FAXmaker)

Mailcc line

The Mailcc line fixes who should receive a copy of the PDF document. The command syntax is like the mailto command.

Example:

```
eMailCC: "Stefan" <Stefan@wrocklage.de>  
[SMTP:stefan@aloaha.com]and[FAX:0815]  
(important if you like to connect Aloaha with native FAX Connectors as for example GFI FAXmaker)
```

Mailfrom

The Mailfrom command has the same syntax like the other commands. The only difference consists in the fact that the first command is evaluated. This works only with SMTP servers which admit this.

```
eMailFrom: "Me" me@aloaha.com
```

Subject

Defines the subject line of e-mail. Only the first Subject command is executed.

Example:

```
Subject: Im Anhang finden Sie die Diskussionsthemen!
```

Body

The body command controls the text contents of the e-mail. All body commands are joined to a whole body.

```
Body: Wie wir schon In unserem Meeting besprochen haben  
Body: sende ich Ihnen das angeforderte Prospekt  
Body: Beachten Sie dass ich das Dokument digital signiert habe.
```

Attachment

The attachment command can be used to attach other files to the outgoing message. This command must be placed on the first page of the document.

Example:

```
Attachment: <Dateipfad>
```

HTMLPath

The HTMLPath command is used to define the body of e-mail as a HTML file. This command overwrites the body command.

```
Application: HTMLPath: <Dateipfad der HTML Vorlage>
```

If you want to use this template always, you can put the value in the registration on constantly.

The key is HKLM\Software\Aloaha\pdf\HTMLPath

TextPath

The TextPath command is like the HTMLPath command. He puts the text contents of the message and overwrites the body command.

```
Application: TextPath: <Dateipfad der TXT Vorlage>
```

If you always liked to use the same text, give the text template in the registration with following key:

HKLM\Software\Aloaha\pdf\TextPath

PDFName

The command PDFName fixes the filename of the attached PDF document.

```
Application: PDFName: <PDF Name>
```

If you always liked to use the same PDF names, you can fix this value in the registration in following key:

HKLM\Software\Aloaha\pdf\PDFName

RemoveFirstPage

Commands on the 1st page instruct Aloaha to delete the first page of the PDF document, before it is saved and dispatched by e-mail.

AppendPDF

This command placed on the first page instructs Aloaha in addition, files which have the same name like already existing files not to overwrite, but to attach.

```
appendpdf: bla.pdf  
oder  
appendpdf: c:\pdf\hallo.pdf  
oder  
appendpdf: name
```

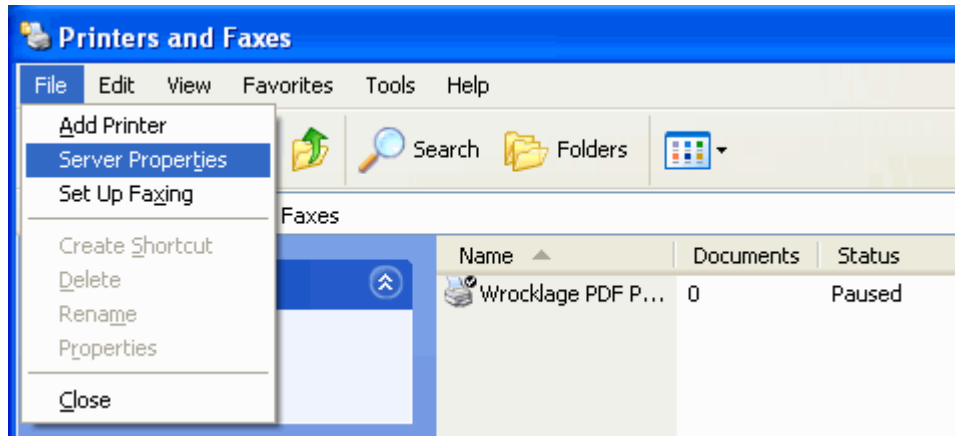
5.3 Fitting of the page size

The Aloaha PDF printer contains normally already a huge number of page formats. e.g., A0-A9, B0-B9, C0-C9, character, etc.

In some cases it can be necessary to define an individual page size.

The process to define your own page size is rather easy:

1. Open the menu "Printer and Fax machines"
2. Select the Alaoah PDF printer and then select in the file menu of "printers and faxes" the subitem "server properties"



3. Select the register "forms" and activate the check box "create new form"

4. Assign in the field Form name a name for your new form

Print Server Properties

Forms Ports Drivers Advanced

Forms on: R-9BD8F1A49F914

10x11
10x14
11 x 17
11x17

Delete

Save Form

Form name: new form

☒ Create a new form

Define a new form by editing the existing name and measurements. Then click Save Form.

Form description (measurements)

Units: ☐ Metric ☒ English

Paper size:

Width: 2.76in Height: 3.15in

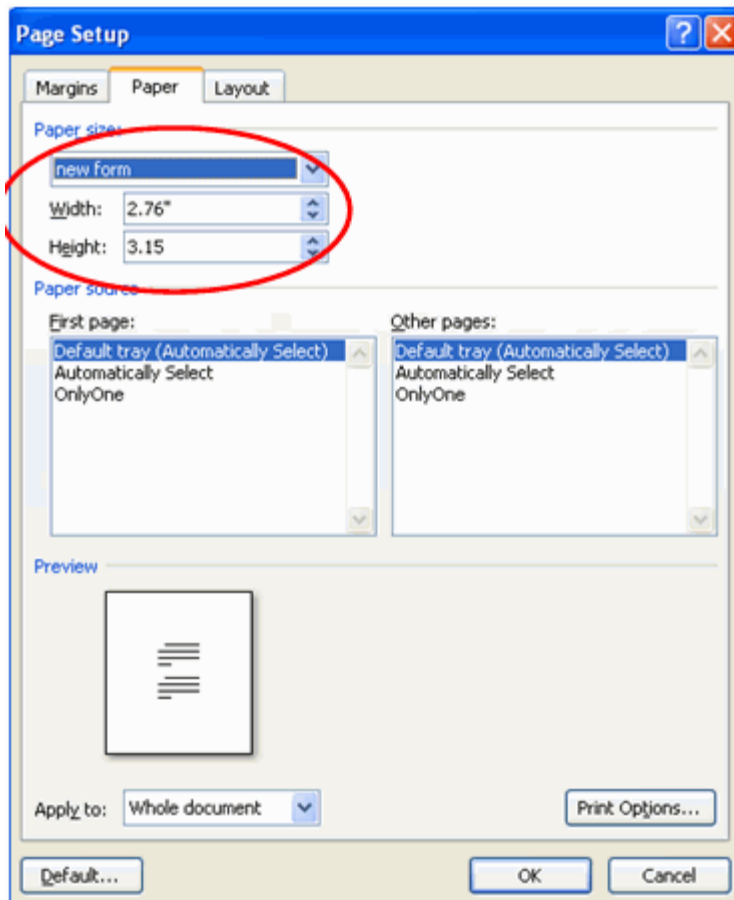
Printer area margins:

Left: 0.00in Top: 0.00in
Right: 0.00in Bottom: 0.00in

OK Cancel Apply

5. Fix the suitable paper size and afterwards click on OK.

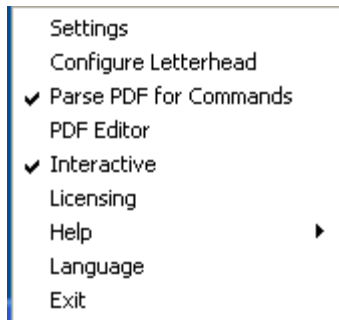
6. Now this new form will be available under "page settings" in your Windows applications!



5.4 Tray menu

You can call some settings of the Aloaha PDF suite in the info range.

If you click with the right button of the mouse on the icon of the Aloaha PDF suite following menu opens:



menu items:

Settings

Calls the settings dialog

Configure Letterhead

Calls the dialog for the letter sheet settings.

Parse PDF for Commands

Here you switch in or off the Aloaha PDF Suite [PDF Scripting](#).

PDF Editor

Calls the [Aloaha PDF Editor](#)

Interactive

With suitable licence you can change in the operation mode of server mode.

Licensing

Here you can see the at most possible users and also the currently used licences.

Help

Calls the Online Help or the Online Forum application

Language

Here you can select which [Userlanguage](#) you would like to use. For the choice stand: German, English, Italian, Dutch

Should you have changed the language setting, the program needs to be restarted, so that the updates become effective.

Exit

Quits the program. If now on the Aloaha PDF printer is printed, no other PDF files are created to the software until it is new launched.

6 Digitally sign

PDF files electronically sign

With the Aloaha PDF Saver you can sign PDF files digitally. An electronic signature is supported after the default of the signature law (SigG) of the Federal Republic of Germany.

Legal electronic calculations can be created.

Calculations which are transmitted by fax or e-mail and/or are provided to download from the Internet (e.g., as a PDF document) and no "certified electronic signature" carry, display no calculation for the purposes of the section 14 to paragraph 3 sales tax law.

From Aloaha PDF Saver created digital signatures are embedded in the PDF document and can be checked with the Acrobat Reader up from version 6.

Digital Signature

A digital signature for the purposes of the law is „a seal generated with a private signature key to digital data which with the help of an accompanying public key, with a signature key certificate of a certification authority stock is, the owner of the signature key and the unadulterated quality of the data reveals“ (SigG.).

With the development of the digital signature the destination was traced to develop one of the personal signature equivalent signature method with which on electronic way data can be signed.

The main problem by transmission of electronic data is the manipulability. The problem could be eliminated only by electronic signature, because an unnoticed manipulation of data is no more possible.

Requirement is that the electronic signature is connected like a handwritten signature inseparably with the respective document. It can be seen by everybody, but only be changed by the signer itself. The signer can be identified and the signature makes every possible manipulation, like additional pranks or changing text passages, immediately recognizable.

By the certificate check can be proved that the signature was not faked and the certificate owner is real. except his name no personal data is revealed.

Legal regulations

Definitions of different kinds of the digital signature are found in the signature law (SigG) and in the order to the signature law (SigV). In it demands for the electronic signatures are as well displayed as Certification Service Provider (ZDA) were defined.

It is distinguished in **easy**, **advanced** and **certified** digital signatures. Every signature stands for a certain quality level. The higher valued the signature, the more meaning she has for the legal relations, and the greater is the functionality.

Only certified signatures fulfil the demands concerning electronic data just as the handwritten signature demands concerning data in paper form. They are admitted in court as an evidence.

The cryptographic algorithms admitted for certified electronic signatures are approved and published by the federal network agency. under www.bundesnetzagentur.de you find a list of all accredited Certification Service Provider (trust centres). There are also listed the products admitted for a certified electronic signature.

The requirements for a certified signature are given when:

- this can be associated exclusively to the signatory who admits unequivocal identification of the signatory
- with means is created which only the signatory controls
- makes every additional update of the signed data evident
- is based on a certified certificate

A certified certificate can only be issued by an accredited Certification Service Provider.

Particularly strict demands concerning the security of the key creation and the organisation of the trust centre are valid. The observance of the legal instructions through the trust centre is in Germany also controlled by the federal network agency.

Public Key procedures

Digital signatures are based on asymmetrical Crypto systems and use a key pair which passes signature key of a private (confidential one) and public (not confidential).

The data which were encoded with one key can be opened again only with the other.

In order to sign the private key is used. The key is on the chip of the card and cannot be read out.

The data to be processed are loaded on the chip, are encrypted or decrypted there and transmitted again back to the computer.

To use the private key, the right PIN which guarantees additional security is required. The signature can be only from the card owner, because only he is in possession of card and PIN.

The public key is integrated into a certificate and is available for everyone. This can also be retrieved by directory services via LDAP or HTTP. Of course he can also be dispatched by e-mail.

To guarantee that the certificate and therefore the key was not faked, every certificate is signed by the publisher. Therefore checks up to themselves whether the certificate of a trustworthy place was published.

While checking the signature the public key of the receiver is used. The encrypted Hash value of the publisher is decrypted and compared to the Hash value of the document. If both values agree the document was not modified.

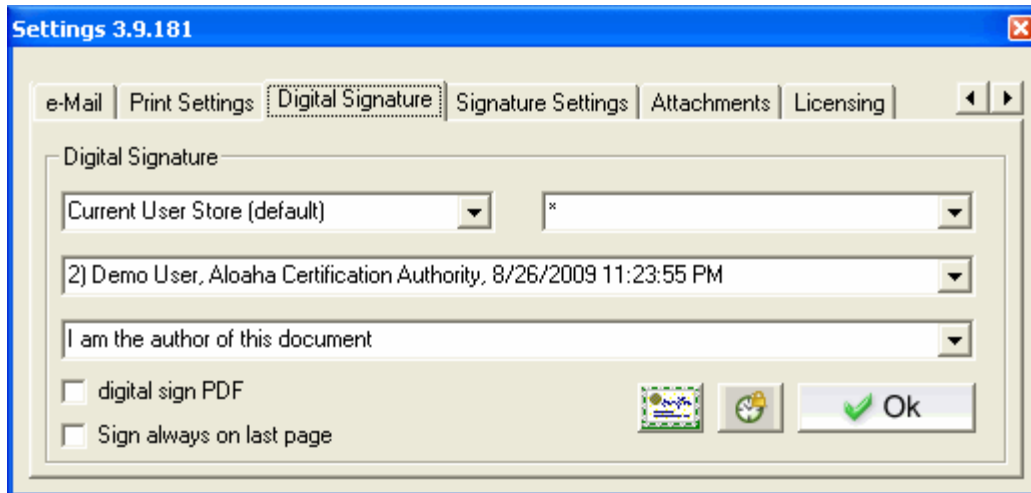
While signing a file a Hash value which is comparable with a fingerprint is formed. Two different documents can never have the same Hash value. The Hash value is encrypted under use of a key with a length of at least 1024 bits (depending on the used card) after the procedure RSA .

The encryption of the Hash value takes place on the card with electronic chip processor which can process smaller data volumes. Thus it is made sure that the private key does not leave the card.

The encoded Hash value is sent back again to the computer and is seated in the document to be signed. Before the document could be signed the private key must be released by the right PIN (Personal Identification Number).

6.1 Settings

About the menu point Settings in the Aloaha info menu you call the configuration.



1. Certificate source

Here you can select between different kinds of the certificates which you would like to use for signing of your PDF files.

Options:

- **Computer certificates**
All certificates which are associated in Windows certificate store to the computer are indicated in the certificate-choice list.
- **User certificates (standard)**
All certificates which are associated in Windows certificate store to the actual user are indicated in the certificate-choice list.
- **Active Directory certificates**
All certificates which are available in the Active Directory are indicated in the certificate-choice list.
- **SmartCard (e-ID)**
All connected card readers are indicated in the certificate-choice list.

2. Certificate Filter

Here you can filter the certificate list of the indicated certificates after special certificate attributes.

3. Certificate select

This menu depends on the certificate source. If you select "user's certificate", you will receive in this field a listing of all user's certificates on your PC and can select there the corresponding one. If you select the SmartCard (e-ID) option, a listing of all installed SmartCard readers on your computer appears in this menu. The Aloaha PDF Suite recognises automatically the Smart-Card inserted in the card reader and can read the certificates of supported cards.

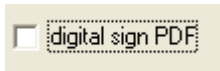
4. Purpose of the signature

This field appears only if the check box "digital sign PDF" is activated. Here you can select from several signatures which should be automatically used.

Options:

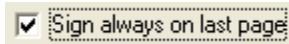
- I am the author of this document
- I sign this document
- I agree to this document
- I have seen this document
- I have got this document

5. Sign digitally



If this check box is activated, every PDF file is automatically signed with the Aloaha PDF Suite.

6. Sign always on last page



means that the signature of a multilateral document is always placed on the last page.

7. Certificate import



With this button you can import PFX files in Windows certificate memory.

8. Settings for the time stamp



If you click on the watch icon another window opens:

A dialog box titled "TSA Configuration" with a blue header bar and a red close button. It contains a dropdown menu with "http://AloahaTimestamp" selected. Below it is a checkbox labeled "Enable Timestamping" and a button labeled "Download TSA List". Further down are three text input fields labeled "Username:", "Password:", and "Certificate:". At the bottom are three buttons: "Test", "OK", and "Cancel".

Here you can customise the settings for the integrated RFC 3161 compatible time stamp client.

In the upper field you select the time stamp server. If the field is empty, you can download the list of the possible time stamp servers from the Aloaha Website.

If you select <http://AloahaTimestamp>, the PDF suite integrated TimeStamp server is used. On this occasion, the local system time is taken as a basis for the time stamp.

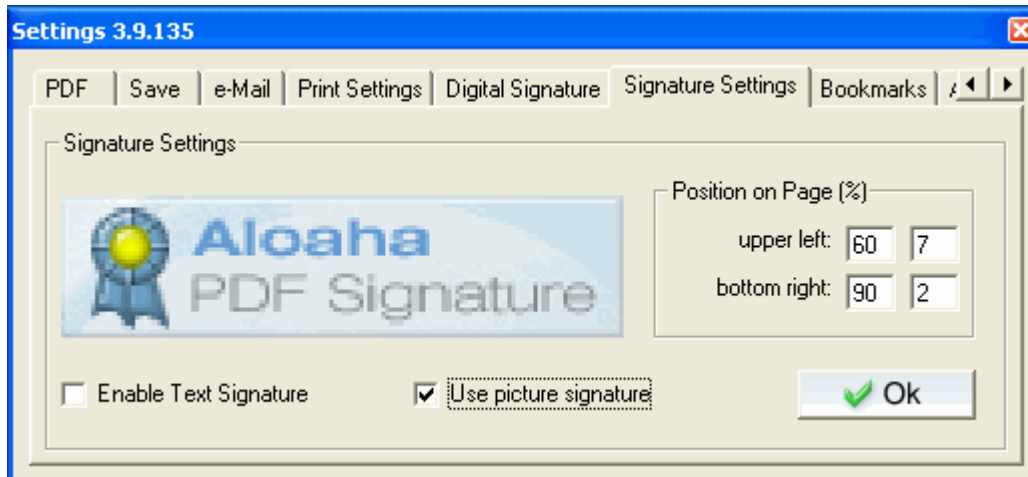
In user data you configure the access data to the time stamp service.

6.2 Optical settings

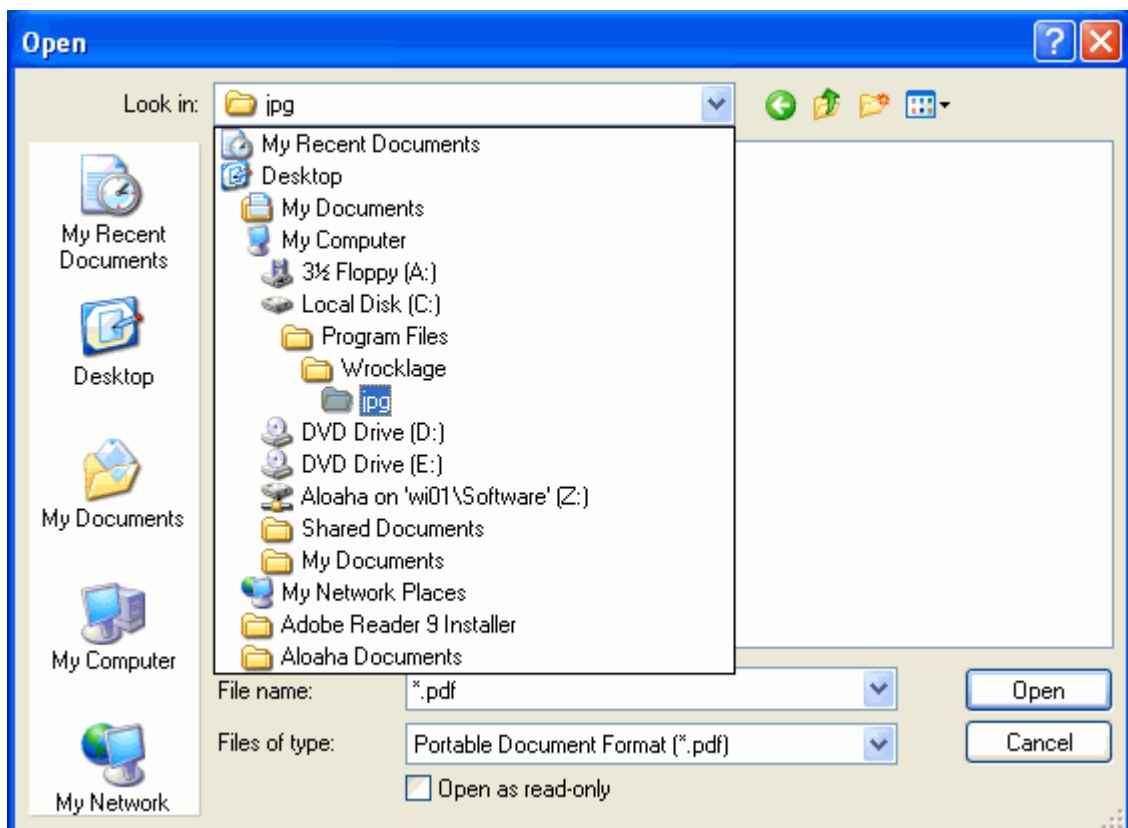
About the menu point Settings in the Aloaha info menu you call the configuration. In this dialogue you configure the optical representation of the signature in a PDF. Options:

Activate picture signature

If this option is selected, a picture is used in the PDF. **By click on the announcement of the topical signature picture you can load own images. This picture must be in the format JPG.**

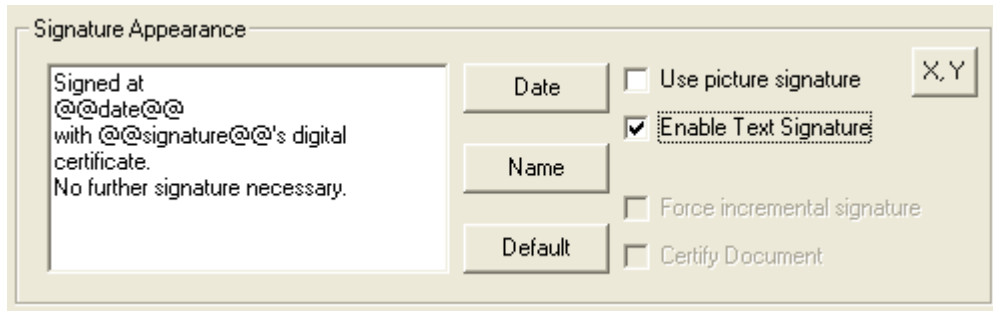


- If you click in the "signature settings" on the signature, the directory in which during the installation all signature pictures are moved opens and you can exchange if necessary actual for another signature.



Activate text Signature

If this option is selected, text will appear in the PDF file. You have the possibility to paste a placeholder for date and name in the actual cursor position by click on "date" and "name". The placeholder will be replaced during the signature process with the actual date and the name of the certificate owner.

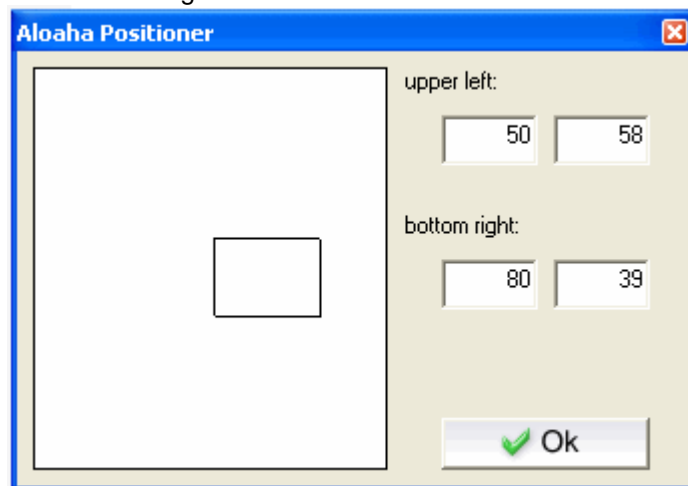


Position of the signature

In the fields you give the position of the signature. On this occasion, it is calculated in % of the page size.

Special feature:

- If you click with the right mouse button in the field "Position in % of the page size", Aloaha opens the Positioner and you can determine with of the right and left mouse button the position and size of the signature field.



6.3 Supported card readers

Aloaha supports all PC/SC card readers of the security class 2 and 3. They were confirmed according to the German signature law and may be used to the production of certified electronic signatures. Here you find a small choice.

Card reader OmniKey Cardman 3621Trust

Card reader Omnikey CardMan® 3821 USB

Card reader Omnikey CardMan Desktop 3121 USB

Card reader SCM CHIPDRIVE® pinpad pro

CHERRY® Smart Terminal ST-2000UC-R

CHERRY® Tastatur G83-6744 LUADE-2 USB DE

Reiner SCT cyberjack

Reiner SCT cyberJack® e-com

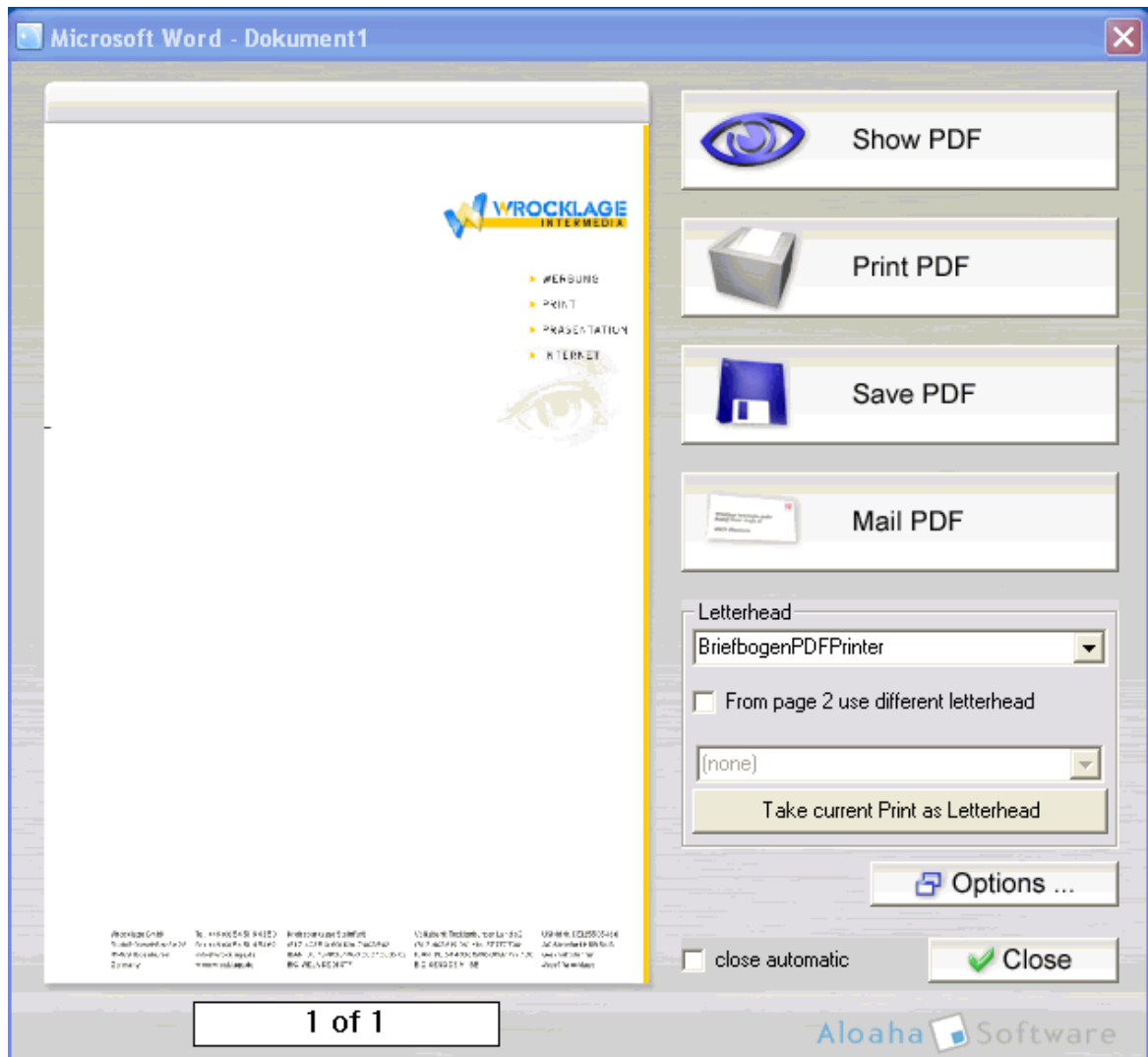
6.4 Supported Smart Cards

Currently approx. 45 cards with electronic chip confirmed by the federal network agency are native supported by the Aloaha software. There is no CSP necessary for these cards. They are the ideal solution for electronic mass signature. Should your card not be accepted by the card reader we ask you to contact our support.

Please contact us if your card is not listed here!

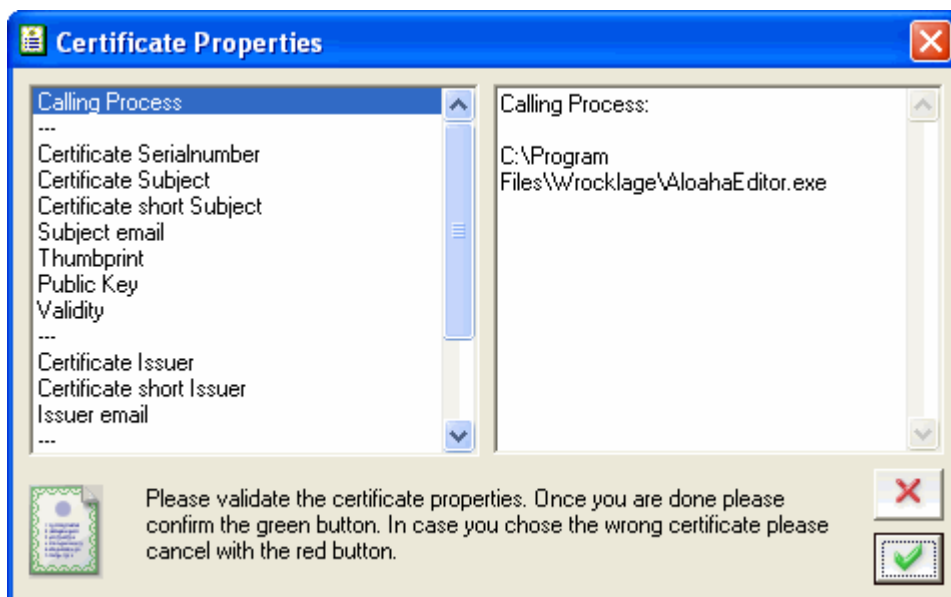
6.5 PDF signing


Print a document from Microsoft Word on the Aloaha PDF printer, the preview dialogue opens.



If in the settings or in the Aloaha menu info area "sign digitally" is selected, will be indicated by one of the actions "show PDF", "print PDF", "save PDF" or "mail PDF" the provided PDF document to sign digitally.

If you sign by card with electronic chip, the following window is shown in which you can recognise which certificate of the card is used and which application tries to initiate signing. Here you can see the data you sign with.

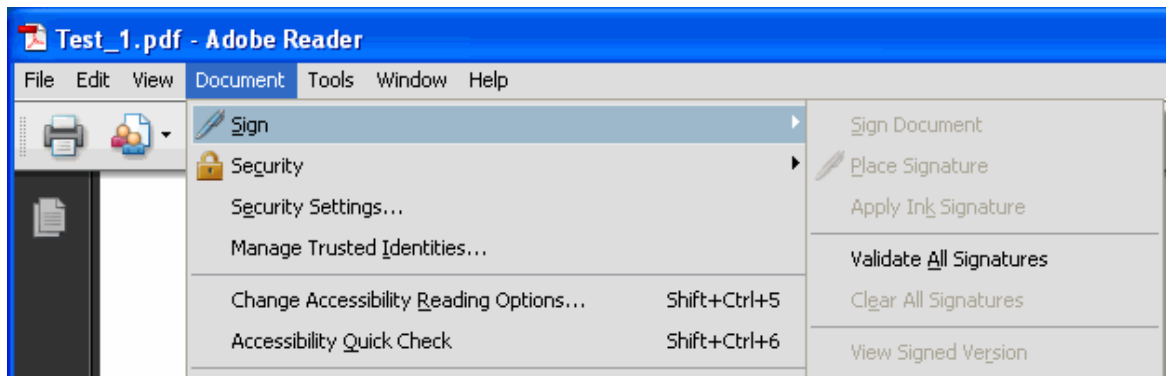


After you have clicked on  you will be requested to enter your PIN in the keyboard of the card reader (sure PIN input).



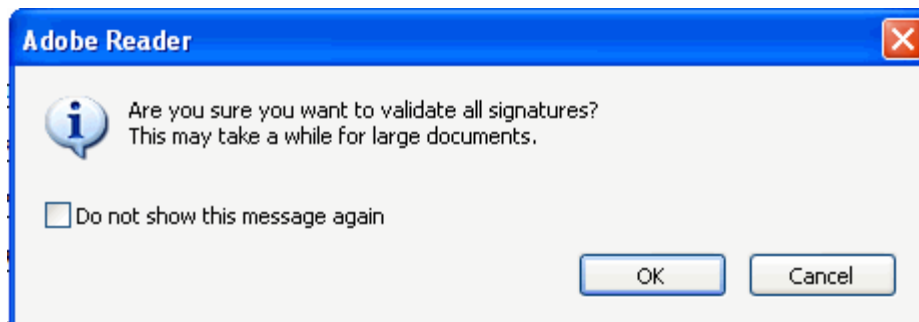
6.6 Signature check

Aloaha PDF signatures are completely Adobe compatible and can be checked with the free available Adobe Reader.



If you want you to check up the signatures, you are asked whether should all signatures be validated?

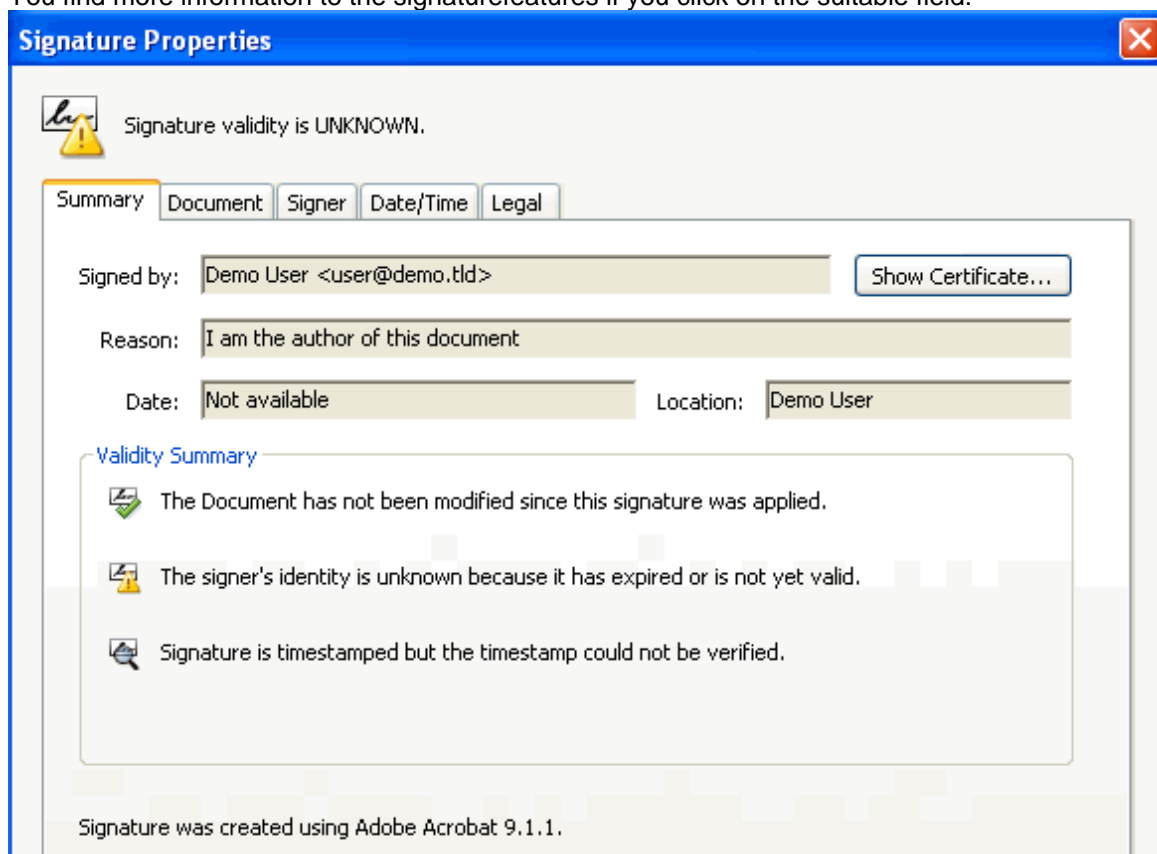
Confirm this security query.



You receive information to the Signaturevalidatestate, if you click afterwards on the Sigantur.



You find more information to the signature features if you click on the suitable field.



7 Server mode

As a standard Aloaha is installed in the "application mode ". The Aloaha service is run by a linking in Windows start menu. This configuration guarantees that per Windows session one authority of Aloaha runs. For example, in terminal service or Citrix Metaframe surroundings.

Sometimes it can be important that regardless of the number of logged in user only one authority of Aloaha runs.

The "server-mode" has to be configured by hand.

In the demo version all functions of the PDF Suite Server, Light, Pro and the SDK version are activated. To be able to use all functions you must request a licence key for the SDK version. If you order afterwards a licence key, make sure that the key the required functions activates.

7.1 Configuration as Windows service

Configure Aloaha PDF Suite to run as Windows Service

Per default the Aloaha PDF Suite is being started via Windows startup/autostart folder. This is the so called application mode. In application mode every user has its own PDF Suite instance running.

Sometimes it can be an advantage to run just one Aloaha PDF Suite instance as a Windows Service. This can be essential if the user plans to use Aloaha as a server application to batch sign invoices or just mass convert files to PDF.

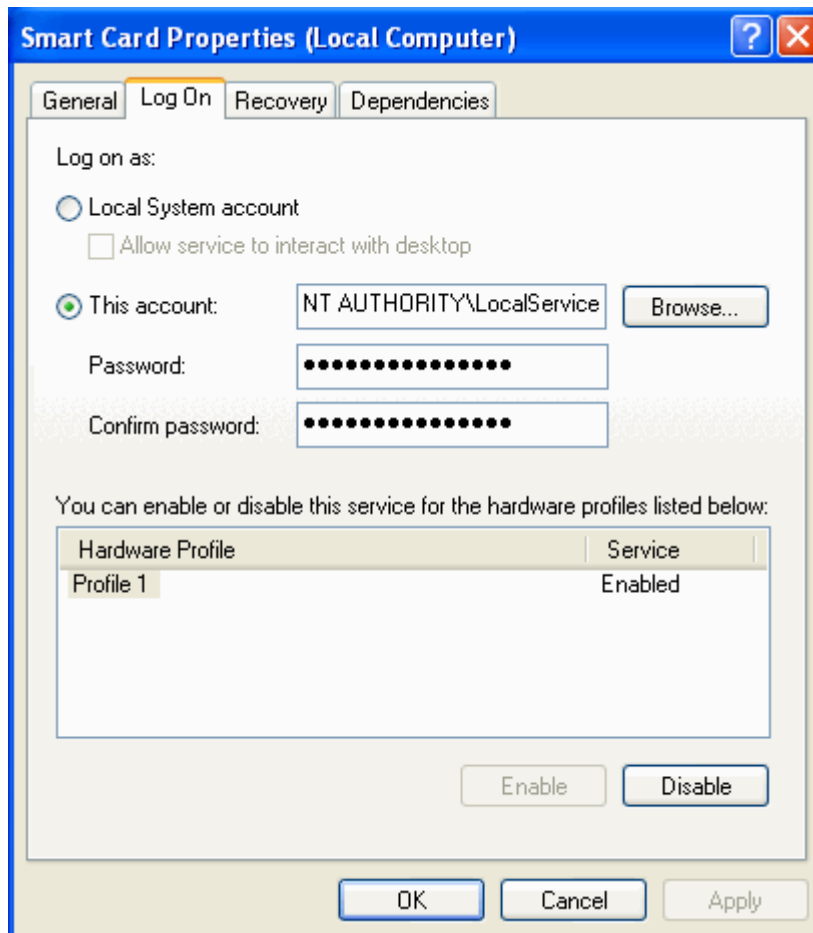
As a first step all instances of Aloaha should be closed and the PDF Suite entry from the startup/autostart folder removed.

In the service configuration the user can choose if the service should run under the default LocalSystem credentials or any other user. **It is strongly recommended to run the PDF Suite service with a dedicated user instead of LocalSystem!**

Both options do have its pros and cons. Usually the LocalSystem account has LocalSystem account is that it is not possible to log on interactive to configure Aloaha. If the native smartcard support should be used it is best to run Aloaha und the LocalSystem account.

Configure Aloaha to run under a user account

Start the services control manager (services.msc) and configure in the Logon tab of "PDF Suite" the preferred user. It is suggested to use a local or domain user **aloaha**. User Aloaha will be treated by Aloaha as if it is LocalSystem. Now please log off and log in as the configured user. After Aloaha has been configured the service can be started.



It is also possible to start a command shell running und LocalSystem credentials. While Aloaha is running just create the key:

```
[ HKLM\SOFTWARE\Aloaha\pdf ]
"callcmd.exe"=dword:00000001
```

As soon Aloaha will detect this key it will launch cmd.exe with the same user credentials as Aloaha (in this case LocalSystem). This cmd.exe session can be used now to configure other things as LocalSystem. Regedit could be launched to edit LocalSystems HKCU Hive or Aloaha POP Settings could be started with "creator.exe /settings" to fine-tune Aloaha.

A more convenient way of configuring Aloaha is to autoimport registry settings on service startup

It is possible to instruct Aloaha to import a registry file (*.reg) on startup. This is mostly used in enterprise/TS/Citrix environments to give every Aloaha user lost once he logs off and on.

During startup Aloaha reads the keys

HKLM\SOFTWARE\Aloaha\AutoRegistryImport and **HKCU\SOFTWARE\Aloaha\AutoRegistryImport**. If these keys contain a path to a *.reg file these *.reg files will automatically be imported into the registry.

Possible values could be:

```
[HKLM\SOFTWARE\Aloaha]
"AutoRegistryImport"="c:\\GlobalSettings.reg"

[HKCU\SOFTWARE\Aloaha]
"AutoRegistryImport"="c:\\UserSettings.reg"
```

Since LocalSystem is just an ordinary user with special rights this mechanism can be used to auto configure Aloaha. Just log on to the machine as any user, configure Aloaha and export HKCU\\Software\\Aloaha to a file (c:\\GlobalSettings.reg for example). Values which are not required or which should not be fixed can be removed with a simple text editor.

Now you create the following key:

```
[HKLM\\SOFTWARE\\Aloaha]
"AutoRegistryImport"="c:\\GlobalSettings.reg"
```

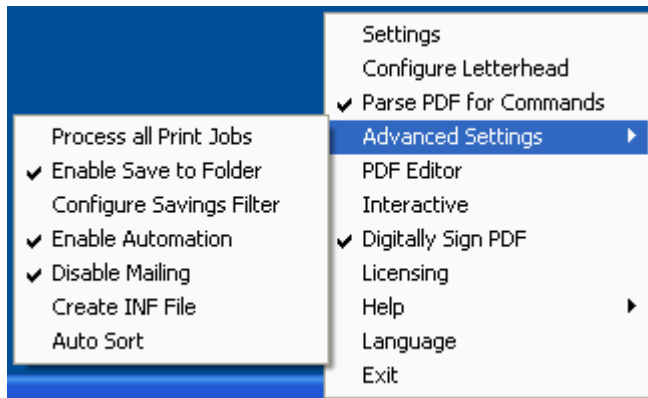
Every time Aloaha starts it will import GlobalSettings.reg into the registry. All Users (incl. LocalSystem) will use the same configuration as defined in the registry template.

7.2 Tray menu

You reach the server mode if you disable the field "Interactive" in the Aloaha Traymenu.



You receive another menu under "Advanced settings"



Here you are able to switch on and off the following options:

Process all print-jobs

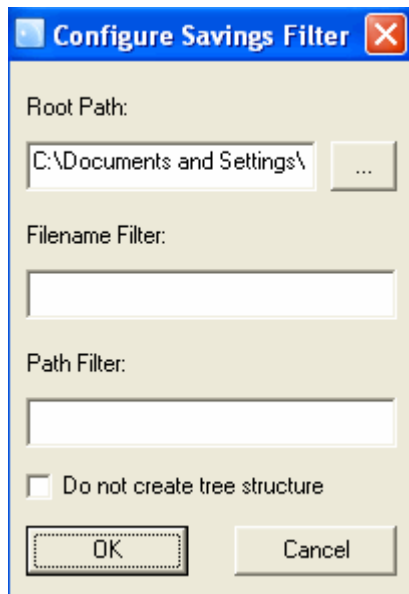
If this option is selected, all print-jobs of the system are processed by the printer in the configuration. If the option is not selected only the print-jobs of the actual Windows user are processed.

Save in directory

All generated PDF files become stored in the under "Save" configured folder.

Configure filter

With this menu point you call an other dialogue:



Here you can fix in which structure the generated PDF files are filed in the target folder. In "sorting files" you find an explanation to the filters.

Activate automation

Here you fix whether the automation orders are processed or not.

Mailing disabled

If the Aloaha PDF find suite in your PDF files E-mail addresses, the generated PDF file is dispatched to this e-mail address. You can switch on and off this behaviour with this menu.

Create INF file

If this option is activated, the Aloaha PDF Suite generates to every generated PDF file an INI file. This file INI can be used for own evaluations or follow up in other programs. The data content are as follows.

```
printer=HP Color LaserJet 4550 PCL
path=C:\Dokumente und Einstellungen\XXX\Eigene Dateien\pdf\mw\
15_20070131162914.pdf
jobid=15
MachineName=\\XXX
name=XXX
time=31.01.2007 16:29:09
faxsubject=Ihre Auftragsbestätigung Nr. XXXXX von
Wrocklage Intermedia
recipient=mw@wrocklage.de
from="mw@wrocklage.de" <mw@wrocklage.de>
subject=Ihre Auftragsbestätigung Nr. XXXXX von Wrocklage Intermedia
body=<p><font face="Arial, Helvetica, sans-serif">Guten Tag,
</font></p><p><font face="Arial, Helvet
```

Sorting

Here you choose whether generated PDF files should be filed sorted as under "files sort" is described.

7.3 Automation command

A very important feature of Aloaha is the ability to evaluate and to execute commands which are embedded in original documents.

For example, it is possibly the command

attachmentPDF:

to embed followed by a certain file path in the original document. The file will be embedded automatically into the PDF file which is created.

The command

PDFName:

defines the filename which the PDF file while saving receives.

The command

autoprint

copies every generated PDF file in the Autoprint folder.

The keyword

UniqueContainerName

orders Aloaha to sign the PDF document with the standard signature settings. The keyword UniqueContainerName followed by UniqueContainerName of the certificate orders Aloaha to sign with the given certificate.

UniqueContainerName: 0

would ask to sign the PDF file with the certified certificate of the first connected card reader.

The keyword

RemoveFirstPage

deletes the first page of the PDF document. This is a very important feature to delete embedded instructions from the document!

The command

DefaultPath:

overwrites the standard path which was generated for the file assortment.

With the command

Background:

it is possible to give another writing paper to every page. The fact that the background command every page is browsed is not automatically enabled. You must activate the writing paper settings the function "Browse every page of the PDF after "background" command". If you have activated this, place a command like **Background: c:\letterheads\company.pdf**. Every page can contain different background commands!

Aloaha PDF Suite Server and Enterprise edition User use very often the Aloaha Automailer and the Aloaha fax Connector. The Automailer can be automated with commands like **emailto**, **emailcc**, **emailfrom**, **Subject**, **body** etc. The Fax CKonnector can be automated with the command FAX and other.

If you liked to have added own commands in Aloaha, do not hesitate to contact our support department with the following form.

7.4 Controlled folder

Aloaha Autoprint list

All files which are discarded in the Aloaha Autoprint directory are automatically printed out. Non-PDF files are printed about normal Windows Handler. If e.g., Microsoft Word is installed, are *.doc files also printed out.

Aloaha signature list

All files which are discarded in the Aloaha to sign list are automatically signed. Should several tosign lists be necessary you read in the column "Tosign folder".

Aloaha Image2PDF list

All images which are discarded in the Aloaha image2PDF list are automatically converted into PDF.

Aloaha Splitter

All multilateral PDF files which are discarded in the Aloaha splitter list are automatically converted into single PDF files.

Aloaha command folder

All files which are laid in the Aloaha Command folder are automatically run with the adjusted command. Normally every *.pdf document is printed out on the standard printer.

As a specific feature the Command folder can be run with every in the Registry Keys adjusted option. The following Keys are relevant.

`HKEY_Local_MACHINE\SOFTWARE\Aloaha\pdf\commando`

The order which is explained. By default the standard PDF use is used here.

`HKEY_Local_MACHINE\SOFTWARE\Aloaha\pdf\commandfolder`

The controlled folder.

`HKEY_Local_MACHINE\SOFTWARE\Aloaha\pdf\commandtimeout`

Time-out in seconds. After this time the file is shifted in the folder "done". As long as the file is used, is tried to shift 10*timeout seconds long. The default is 10 seconds.

`HKEY_Local_MACHINE\SOFTWARE\Aloaha\pdf\commandext`

The file enlargement it is worked on. The default is *.pdf

Aloaha DropMailer list

From version 2.1.237 Aloaha analyses every PDF document which in the DropMailer list is filed. If valid Automailer commands are discovered Aloaha dispatches the document via email or FAX.

Aloaha Optimizer list

All files which are filed in this folder are optimised. PDF objects are brought in the right order, single signs are summarised to words and bitmap pictures are changed in JPG or pictures JPG2000.

7.4.1 Dropmail folder

In some environments Aloaha is not used for PDF creation but only used for digital signatures and automatic document delivery via SMTP/WebDAV and/or FAX.

To be able to use the Automailer Commands on existing PDF documents just drop your files into the Dropmailer directory. Aloaha will analyse the document, parse for embedded commands and will execute them as configured in the Aloaha Settings.

7.4.2 Autoprint folder

The Aloaha Autoprint folder is a feature to automate PDF files or hard copies of existing PDFs.

Non PDF Documents

Every non PDF document which is discarded in the Aloaha Autoprint folder, is automatically printed out with the Windows Printhead. If this printer is monitored by Aloaha (e.g., like the Wrocklage PDF printer), the printing job is automatically converted into the PDF format.

The standard Windows Printhead can become reconfigured in the registration according to file type.

```
HKCU\Software\Aloaha\pdf\autoprint und/oder  
HKLM\Software\Aloaha\pdf\autoprint
```

PDF Documents

Every in the Autoprint folder stored PDF document, is sent about the Aloaha printing engine to the printer which is set into Aloaha as a hard copy to printer. If this printer is not arranged, the default printer is used. Vollduplex printing can be activated/deactivated under HKLM\Software\Aloaha\pdf\PrintDuplex. Valid values of the PrintDuplex key are 0, 1 or 2.

It is possible, files which should be printed to attach with writing paper. Open the dialog "Configure writing paper" and activate "Use letter sheet for Autoprint directory".

Autoprint Command

The automation command autoprint can be embedded in your PDF files. Then Aloaha copies generated documents directly into the Autoprint folder!

Sub directories

You can also create subdirectories in the Autoprint directory. These directories must include exactly the name of the printer which is used for the printout. If you create a folder hp500, everything what is discarded to this folder will be printed on the printer hp500. If you liked to print on a network printer, the server name must be put in brackets: from \\servera\hp500 becomes (servera) hp500.

Registry settings

In some cases it is necessary that in Autoprint folder discarded PDF files should be printed including writing paper. In this case you enter

```
HKLM\Software\Aloaha\pdf\autoprint\Letter\Head
```

as the path to a PDF the file which you would like to use as a writing paper.

HKLM\Software\Aloaha\pdf\autoprint\render\Letter\Head must be set on "1" to activate this feature!

So that the Autoprint folder works, Aloaha must be ran in the NON INTERACTIVE mode (server mode)! A server licence is necessary!

7.4.3 Tosign folder

The Aloaha "tosign" watched folder is to be used to apply fully automatic digital signatures to existing PDF documents. Every document dropped into this folder will be digitally signed according to the digital signature settings of the Aloaha PDF Suite. Please note that a evaluation server license is required!

The default path of this folder is **<program files>\wrocklage\tosign**

If needed this location can be changed in the registry:

HKCU\Software\Aloaha\pdf\signfolder (user based setting)

or

HKLM\Software\Aloaha\pdf\signfolder (global setting)

Processed files will be saved in subdirectories called done/failed and original.

From Build 2.5.35 onwards it is possible to re-define the done directory in the registry. Just set the path of the done folder to be used in

HKLM\Software\Aloaha\pdf\MasterDoneFolder or

HKCU\Software\Aloaha\pdf\MasterDoneFolder.

It is also possible to instruct Aloaha NOT to keep the original files. Just set

HKLM\Software\Aloaha\pdf\DoNotKeepOriginal or

HKCU\Software\Aloaha\pdf\DoNotKeepOriginal to "1".

Multiple Certificate Support of watched signature folder

It might be necessary that different certificates have to be used to sign the documents. In that case it would not be acceptable for the use to change the signature settings every time. Aloaha caters for these cases as well.

Just create per certificate to be used a subfolder in "tosign". The name of the subfolder must be the serial number of the certificate used in that folder without spaces.

For example folder **<program**

files>\wrocklage\tosign\61370dcf00000000000a will always sign the documents using the certificate with the serial number

61 37 0d cf 00 00 00 00 00 0a

In case you need to access a native supported SmartCard please use as serial number 0 for the first card reader, 1 for the second etc

Since SmartCards usually ask for a PIN number it makes mass signatures via CSP in some cases quite unusable. For these cases please use our native supported cards and contact our technical support on how to cache the PIN.

It is also possible to use PFX Files for the autosign features. PFX Files MUST NOT be protected by a password and must be located in the pfxdir subdirectory. The subdirectory to be created in tosign MUST carry the same name as the PFX file. For example test.pfx.

Signature appearance based on Certificate Serial Number

When using several digital certificate folder it might be important to configure for every signature a different signature appearance.

To override signature settings please create a file tosign.ini in <program files\wrocklage
The location of this file can be reconfigured in:

HKCU\Software\Aloaha\pdf\tosigninipath

or

HKLM\Software\Aloaha\pdf\tosigninipath

The Section Name is the serial number without spaces. Please see a sample tosign.ini below

```
[61370dcf000000000000a]
location = Pembroke
reason= Test
px1 = 10
px2 = 40
py1 = 98
py2 = 93
picpath = C:\mysink\pdf\printermonitor\jpg\signature.jpg

[0]
location = CardReader 0
reason = Test of CardReader 0
px1 = 60
px2 = 90
py1 = 98
py2 = 93
picpath = C:\mysink\pdf\printermonitor\jpg\george1.jpg

[1]
location = CardReader 1
reason = Test of CardReader 1
px1 = 10
px2 = 40
py1 = 98
py2 = 93
picpath = C:\mysink\pdf\printermonitor\jpg\george.jpg

[c:\program files\wrocklage\pfxdir\text.pfx]
location = PFX Test Certificate
reason = Test Reason
px1 = 10
px2 = 40
py1 = 98
py2 = 93
picpath = C:\mysink\pdf\printermonitor\jpg\george.jpg
```

In case the file specified in picpath does not exist Aloaha will fallback to the default text appearance!

Please note! All certificates used in the tosign folder must reside in the same certificate store. For example current user store.

7.5 Mass signature

If Aloaha works in the non-interactive or server mode, files can be removed PDF in the "tosign" folder. The "tosign" folder is a Hotfolder, which is a folder that is monitored by Aloaha. As soon as Aloaha finds out that PDF are in this folder, these are signed digitally and moved in the subfolder "done".

The "tosign" folder is defined in **HKCU\Software\Aloaha\pdf\signfolder** and shows normally at **<programmes> Wrocklage\tosign**

Aloaha batch signatures with several digital certificates

Files which were removed in the "tosign" folder are usually signed with the certificate which was selected in the Aloaha PDF Suite settings. In some cases it can be very important to be able to select the certificate automatically. You create in the tosign folder a subfolder which is given the name of the serial number or the Unique container name of the certificate to be used.

If you generate, e.g., following folder

<Programme>Wrocklage\osign\1ec7bda200000000001e

every document which is signed with the certificate and the serialnumber 1ec7bda200000000001e is removed into this folder. The certificate with the Serialnummer **1ec7bda200000000001e** is included as a test certificate in the Aloaha PDF Suite. The name of the certificate is "Aloaha Public".

Batch signatures via shell extension

Some cards (e.g., the D trust multiscard) are able "to leave open" the card between the signature transactions. With such cards it is possible to select several PDF files in Windows explorer and to sign them via click with the right mouse button in a batch.



7.6 CPU Priority set

Normally the Aloaha processes run with normal CPU priority. In some cases it can be an advantage to change the priority. For example, if you work with terminal servers or Citrix surroundings where many users use the same system.

To configure the CPU priority you have to create a registration key

HKLM\Software\Aloaha\pdf\CPU (string) with one of the following parametres.

- For normal CPU use adjust the value on 32 or 0
- For the slightest CPU use adjust 64
- For high CPU use adjust 128
- For real time CPU use adjust 256 (not recommended)
- For low CPU use you adjust 16384 or 1
- For more than normal CPU use adjust 32768

For taking over the settings in the system, you must restart the Aloaha service.

7.7 Files sort

In some cases it is necessary that generated PDF documents can be sorted:

E.g. if you like to run Aloaha in the non-interactive server mode and make sure that your generated calculations are sorted according to customer and calculation number.

Aloaha's internal Script engine is able to evaluate the data content of the first PDF page and to generate from it a suitable file path for the PDF documents.

Configuration of the automatic PDF file assortment

To activate the automatic PDF file assortment and to configure click on the Aloaha PDF Suite Tray icon and deactivate the interactive mode.

If you click again with the right mouse button on the Aloaha Tray icon you see another menu item: "Advanced settings".

Select in this submenu the option "Put filters save". In the upcoming dialog box you can configure three values:

Main path

The main path defines the upper directory in which the file structure should be generated. In the registration this value is saved at following place:

HKEY_CURRENT_USER\Software\Aloaha\pdf\automailer\outputpath

File Filter

Here you have to enter a regular expression which defines the name of the PDF of document. For example, you could use the following: **Invoice: (.*)**

This value is saved under

HKEY_CURRENT_USER\Software\Aloaha\pdf\automailer\outputpath\pdffilename

Path Filter

The path filter defines the unterpath which is used to save files. The field can also remain empty. If you want to remove your files in a path which contains the customer number enter a regular expression like this:

Customer Number :(.*)

This value is saved under

HKEY_CURRENT_USER\Software\Aloaha\pdf\automailer\savefilter0

If one filter should not be enough the values **savefilter1** to **savefilter9** can be configured by hand in the registration.

For example, you are able to register the date by entering

HKEY_CURRENT_USER\Software\Aloaha\pdf\automailer\savefilter1
as **Date:(.*)**

Global settings

In an Enterprise environment it could be important to initialize a global filter before. In this case you define the values under **HKLM** instead of **HKCU**. Aloaha will take automatically the values from **HKLM** if among **HKCU** none is defined.

Read our Registry2ini mapping function. If you want to transmit of your settings or want to configure this centrally on a server this function is exactly what you need.

Regular expressions

If you need help by creation of regular expressions, do not hesitate to contact us under:
aloaha@wrocklage.de

7.8 Registry2ini

One of today's enterprise requirements is the possibility to roam profiles or simply to reset configuration data every time a user logs in.

Aloaha PDF Suite offers a very flexible way to accomplish this. Instead of using the registry for the global and user settings the user can opt to map the registry to ini files.

The advantages of this registry2ini mapping are huge.

- Settings are stored in plain text files and can be included in your company's backup strategy.
- Settings can be easily roamed across different machines.
- Well defined configurations can be kept centrally on a fileserver.
- User profiles in NT4 Domains can be kept read-only for extra security.
- Configuration settings can be done to one central configuration file and distributed to the clients.
- Advanced Citrix Metaframe and Terminal Services compatibility.

The following registry keys are available to configure the registry2ini mapping. Make sure that all keys are of the type REG_SZ (string).

- useini
possible values are 0 and 1. 0 for ini mapping off and 1 for ini mapping enabled.
- userini
location of the ini file for user settings (HKCU)
- userinimaster
if specified userinimaster will be copied over userini at the beginning of the startup of Aloaha
- globalini
location of the ini file for global settings (everything except HKCU)
- globalinimaster
if specified globalinimaster will be copied over globalini at the beginning of the startup of Aloaha
- precommand
specifies the command being call before globalinimaster and userinimaster are copied. Could hold a command to map a network drive.
For example cmd.exe "/c net use U: \\gate\d\$"

These keys are located in HKLM\Software\Aloaha

How do I enable the Aloaha registry2ini mapping feature?

1. Stop all running creator.exe instances.
1. Open the registry editor and create a string value useini in HKLM\Software\Aloaha with value 1. Please make sure to use type REG_SZ
1. Define the inifiles to be used.
 1. HKLM\Software\Aloaha\userini will keep user based settings
 1. HKLM\Software\Aloaha\globalini will keep global settings
1. All HKCU\Software\Aloaha Hives can be deleted now since they are not used anymore

How do I resetting settings to a defined state every time Aloaha starts?

If you define the keys HKLM\Software\Aloaha\userinimaster and HKLM\Software\Aloaha\globalinimaster these files will be always copied over userini and globalini whenever Aloaha starts.

How do I map a network drive fully automatic whenever Aloaha starts?

Just configure a command such as cmd.exe "/c net use U: \\2x\d\$" in the precommand value.

Please note that Aloaha supports two predefined variables. They are %mydocuments% and %user%. If these variables are used in one of the above settings they be be resolved automatically. For example %user% will be replaced with the current logged on user.

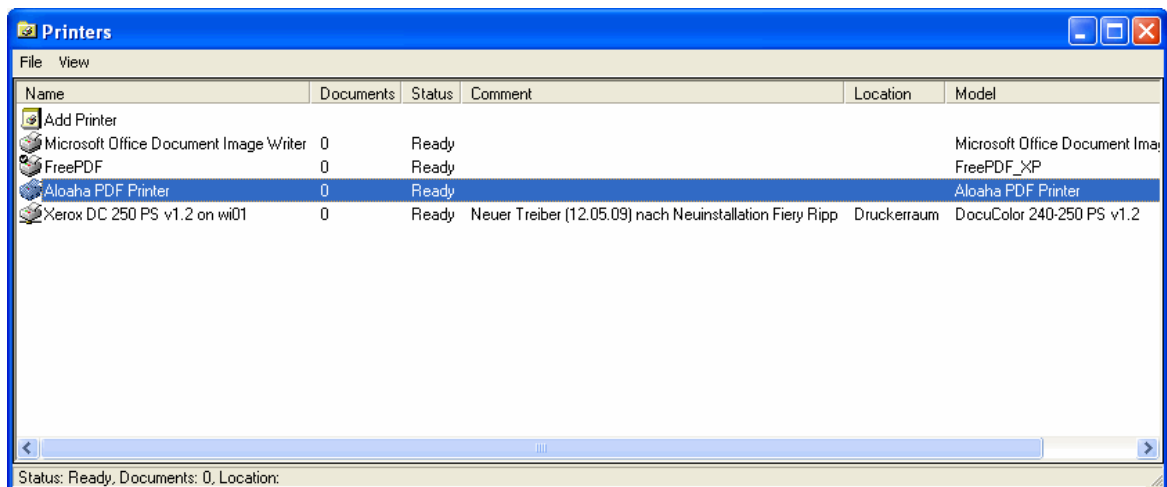
7.9 Monitor all printers

This Article explains how to use the PDF Suite to monitor all your printer queues on your print server.

This is useful if you plan to retire your printer.

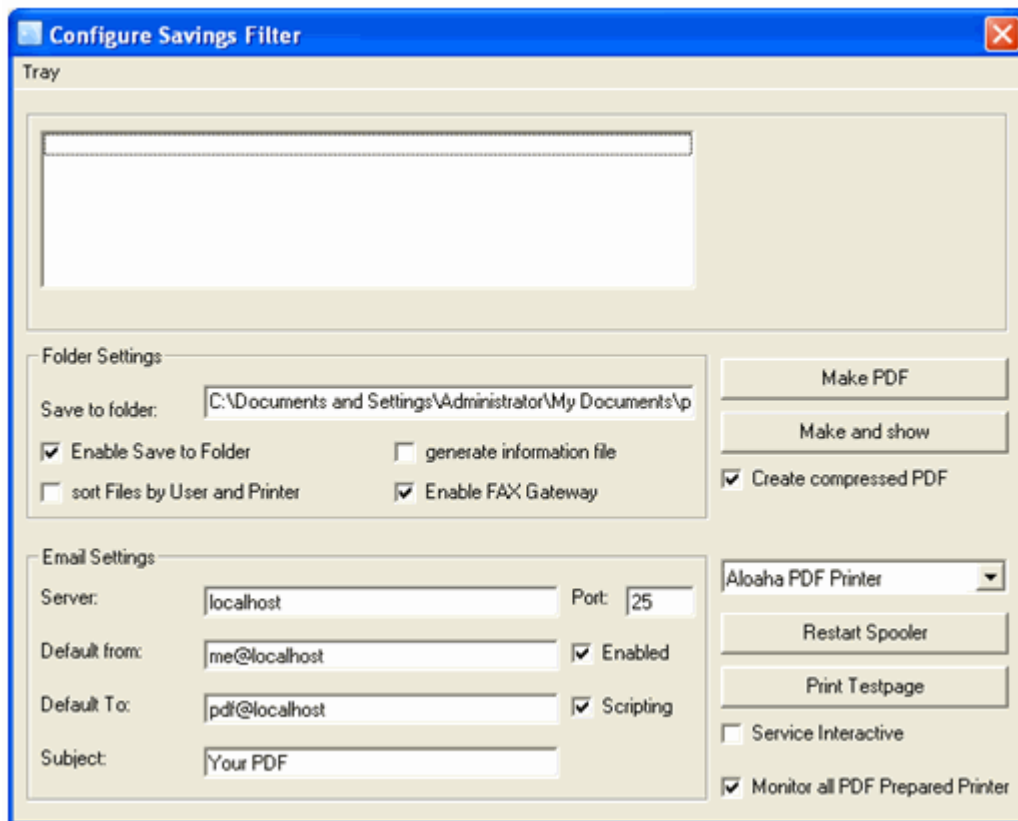
The basic idea of the Aloaha PDF Suite is to monitor the printer queue and convert all documents in the monitored queue into vector based PDF Documents. This could be useful if you would like to publish all incoming FAXES to a Mailbox or Public Folder as PDF (FAX2PDF). Per default the PDF Suite is installed to monitor only the queue of the Aloaha PDF Printer. With a few clicks you can change the PDF Suite to monitor another Printer or all Printer. I will explain how.

Monitored printers have to be configured in a way that the Aloaha Suite is able to communicate with them. That can be done with the Printer Control Panel of windows. To make it easier we included a tool called Monitor which can do that task for you with one Mouse click. All you need to do is to call the tool monitor.exe from the Aloaha PDF Suite installation directory.



Once the Printer Monitor starts you simply choose your printer and call "PDF Prepare" from the File Menu. You will see the mouse cursor changing a couple of times. That means that the changes are being applied successfully. Before you close the monitor and after you made changes it is wise but not needed to restart the printer spooler. That can be done via the File Menu as well. Your printers are now prepared to be monitored by the Aloaha PDF Suite.

All you need to do now is to reconfigure the PDF Print Service. Please browse to the Aloaha PDF Suite installation directory and call creator.exe.



You will see two interesting options. "Service Interactive" and "Monitor all PDF Prepared Printer". To monitor all printers you activate the "Monitor all PDF Prepared Printer" option. In case you want to run the PDF Suite non interactive you disable the "Service Interactive" option. In case you run the Suite in non interactive or server mode you need to enable either the save to folder or the email settings. Of course you can enable both modes parallel as well.

7.10 Archive every printout as PDF

Unlike other PDF tools Aloaha PDF Suite is not a virtual printer driver or depends on any special printer driver. Aloaha is a print spooler monitor which installs per default the Aloaha PDF Printer to keep the installation transparent and easy.

Below you find a real life example on how you could configure Aloaha to monitor all your printers connected to the print server. To keep the example simple we will monitor Printer A and Printer B.

As the first step you would obviously install Aloaha from http://www.aloaha.com/download/aloaha_pdf.zip. Per default Aloaha installs in application mode. To run silent in the background it is advised to re-configure Aloaha to run as a service. Please remove the Aloaha entry from the autostart/startup folder of your start menu and exit Aloaha with a right click on the tray icon.

Now Printer A and Printer B need to be renamed to something else so the names can be used for the new PDF Printer later on. The advantage is that your users do not need to learn new printer names. In this example we rename Printer A and Printer B in Printer A_physical and Printer B_physical.

The next step is to open the printer manager and add 2 new Aloaha PDF Printer. It is irrelevant to which physical ports they will be connected since they will be paused later on anyway. These 2 new Aloaha PDF Printer should be renamed to Printer A and Printer B.

The 2 new printers require some re-configuration. To make it easier for the administrator Aloaha includes a special configuration tool. It is called monitor.exe and can be found in the Aloaha PDF Suite installation directory. (C:\program files\wrocklage\monitor.exe) Please call this tool and right click on the new Printer A and Printer B (the renamed Aloaha PDF Printer) and choose PDF prepare.

The tool will configure the print processor to use EMF and will pause the printer.

To enable the automatic hardcopy feature the tool PMonConfig.exe needs to be called from the Aloaha PDF Suite installation directory. (C:\program files\wrocklage\PMonConfig.exe)

In the upper drop down list you can choose the printer to be configured. In the drop down list at the bottom you can choose the hardcopy printer.

For this example Printer A should be chosen from the first drop down list and Printer A_physical from the list at the bottom.

Of course enable "Print hardcopy to printer above" should be checked.
The same steps need to be done for Printer B

Last but not least Aloaha needs to "know" to monitor all the new printers. Please open the creator.exe from the Aloaha PDF Suite installation directory. (c:\program files\wrocklage\creator.exe)

Here you need to

1. Enable save to folder in case you want to archive every printout as PDF to disk.
2. Enable at the right bottom "Monitor all PDF prepared printer"
3. Disable "Service interactive"

As a last step you start Aloaha as a service. Open the services control panel (services.msc) and configure the PDF Suite service to start automatic and start the service.

Now you can start printing to Printer A and Printer B. Every document will be saved to disk as PDF and printed to the configured hardcopy printer.

Please note that Aloaha every 5 seconds will monitor one printer. That means that in your case after 2 printers x 5 seconds all printers have been checked. You can reduce the 5 seconds if you configure HKLM\Software\Aloaha\pdf\intervall to 1000

8 PDF Editor

With in the PDF Suite integrated Aloaha PDF editor you can execute in existing PDF files various operations, as for example:

- add notes
- to create PDF-hyperlinks
- Text stamp
- Text lines
- to fill form fields
- save forms
- to add attachments
- 40/128 Bit Encryption with legal assignment
- to add pictures
- to add invisible tracking images

Trace with the help of Tracking images who, when and where which page of your with Aloaha generated PDF documents reads.

- to delete pages
- to add pages
- to remove pages
- to exclude pages
- to load picture an safe as pdf (img2pdf)
- to mount pages
- to change the order of pages
- create table of contents with bookmark (Levels indefinitely)
- to change security settings of the document without owner's password (APDFPR)
- to print pages / documents. Also oversized documents as for example A0 drawings can be printed thus on your A4 printer.
- to compress documents; JPG and JPG2000 are possible

Note: The PDF editor is included in the software package the PDF suite, but would not be supported by us! In this manual is no other documentation performed to this software.

9 Language.ini

Aloaha Translation/Localisation Engine

Recent Builds of Aloaha localise/translate used strings fully automatic. String Tables are saved as ini files to allow the user to change strings himself or to localise into a new language without having to touch the Aloaha Code.

Translation Mechanism

- When Aloaha starts it looks for the language settings in language.ini. If that file does not exist Aloaha will ask
 - o HKCU\Software\Aloaha\language
 - o HKLM\Software\Aloaha\language
 - o The Operating System LanguageID
- Based on the LanguageID Aloaha will ask UserLanguage_<ID>.ini for the string translation. If that file does not contain the correct translation Aloaha will ask Language_<ID>.ini
- The file Language_<ID>.ini will be overwritten by every setup/upgrade. In case a user wants to modify strings it is suggested to use UserLanguage_<ID>.ini

Language.ini

Section [Mapping] instructs to map one language to another. For example 410=409 would mean to use english (409) on italian (410) systems

Section [languageID] defines which ini files to use for the current mapping.

Translation Files

First Aloaha will ask UserLanguage_<ID> for the translation. If no translation is found it will ask Language_<ID> for the translation.

If a user wants to change strings it is advised to do the changes in UserLanguage_<ID>.ini since Language_<ID>.ini will be overwritten with every setup/upgrade.

It is also possible to set registry key HKLM\Software\Aloaha\pdf\WriteMissing to 1. In that case Aloaha will log all Translation Problems to MissedLanguage_<ID>.ini. This is very useful to find the strings to be translated for the new language/localisation.

10 FAQ

Why are my drop folders not working?

Please note that for the drop folder functionality Aloaha must be configured not interactive. In addition you click with the right mouse button on the system Tray icon and remove the option beside interactively.

Note: For this function you must own the Aloaha server version.

Which type of digital Signatures is Aloaha using?

Aloaha is using standard Adobe PPKMS Signatures which are encrypted as PKCS#7

Do I need a special Software to verify digital signatures?

No, an installed Adobe Reader 6 or higher is enough. Please note that Adobe 6 Reader cannot display all Digital Certificate Properties. It is suggest to verify digital signatures with Adobe Reader 7 or later. To display and validate time stamps minimum Adobe Reader 7 is required! Should you require a signature protocol please have a look at our freeware signature validator Aloaha sign!.

What does the PDF autoprint feature do?

Aloaha PDF contains two autoprint features. One is used to automatically print every generated PDF document to a real printer. This is usefull if you want to archive every printout as a PDF and still want to get the hardcopy.

For PDF batch printing Aloaha supports an autoprint directory. Every PDF Document you drop into the autoprint directory will be printed to the default printer.

Why is the Aloaha PDF Suite generating network traffic?

Unlike other 3rd party PDF Tools the Aloaha PDF Suite is not a virtual printer driver. The Aloaha PDF Suite is a print spooler monitor which converts spooled jobs into PDF. To be able to monitor the spooling process some UDP traffic is being generated.

Futhermore the Aloaha PDF Suite maintains a file called user.ini. This file contains user <-> email mappings which are retrieved from the Active Directory.

How do I password protect the generated PDF File?

Once the preview pops up you can right click on the Aloaha Tray icon to set the password.

How do I attach files to the generated PDF?

Just drag&drop them into the preview pane. Minimum Version 2.1.7 is required.

Why should I embed attachments into the PDF instead of just attaching them to the email?

Just consider how strict nowadays email content checker/virus scanner are. Nearly everybody experienced it allready that an email did not arrive at the recipient because the attached doc caused the email to be quarantined. PDF is considered as safe and is usually not on the blocking list.

I would like to use MS word Mail Merge to send out a PDF Mailing. Is that possible with Aloaha?

Yes, from build 2.1.9 onwards Aloaha PDF Suite introduces the intelligent Automailer. This mailer is able to read content such as email addresses from the printed document to automail that document. Please read more on <http://www.aloaha.com/wi-software-en/automailer.php>

I am using the autoprint folder and would like to define the application used for printing. Is that possible?

You can change the printing application to be used for the autoprint folder in

HKEY_LOCAL_MACHINE\SOFTWARE\Aloaha\pdf\autoprint\action

For example if you are using windows XP and would like to drop your .fax files into the autoprint to be converted and emailed you would add:

HKEY_LOCAL_MACHINE\SOFTWARE\Aloaha\pdf\autoprint\xaction

action=rundll32.exe shimgvw.dll,ImageView_PrintTo /pt "%1" "Aloaha PDF Printer"

Do I need the LiveCycle Server to add Sticky Notes/Annotations to my PDF Documents?

No, you can use the Aloaha PDF Editor/AloahaEditor.exe which is included in Aloaha from Build 2.1.15 onwards.

What signifies "Digitally Rights management (DRM)"?

Aloaha PDF Suite and Aloaha PDF Editor enables you to stock your document with digital rights. Whether you can fix if somebody can change, print or extract your PDF Document. These functions are very important if you work on your ISO 2000 certification. Of course it is an advantage to be able to fix what the receiver can make with the contents of your document.

Can I choose Certificates from other stores than the current user store?

Yes, from build 2.1.80 onwards you can change the certification store with a small registry entry in HKEY_CURRENT_USER\Software\Aloaha\pdf
Just create a value certstore. Per default certstore has the value 0 or 2. Please find other values below:

- 1: LOCAL MACHINE STORE
- 2: CURRENT USER STORE
- 3: ACTIVE DIRECTORY USER STORE
- 4: SMART CARD USER STORE

Does the "template" folder has any function?

Yes, as soon you create a file mailbody.txt in the Aloaha PDF Suite installation folder that file will be used as a template for the PDF Mailer. User changes will be saved to the templates folder. That is very important in multiuser environments such as Citrix Metaframe and Windows Terminal Server.

I installed Aloaha and printed to Wrocklage but cannot see any popup.

If Aloaha detects an Active Directory it will try to explore some system wide printer settings. This is being done only the first time Aloaha starts and can take up to ca. 2 minutes!
In case of a large Active Directory environment it might be useful to disable this feature or to enable the server mode. Please contact our support for advise on how de-activate AD enumeration.

Can I use the Aloaha PDF Suite to scan directly to PDF?

There are two ways to use Aloaha to scan to PDF. The first is to print to the Aloaha PDF Printer and the printjob is being converted to PDF. A much faster and efficient way is to save the Images to the IMG2PDF folder. Aloaha will directly convert the Images of that hotfolder to PDF. The IMG2PDF folder supports even multipage tif or FAX documents.

How do I configure Aloaha to monitor more than one Printer?

You can start the tool creator.exe from the Aloaha PDF Directory and enable "Monitor all PDF Prepared Printer". A restart of any service is NOT needed.

How do I enable autoprint of generated PDF Documents?

You need to start the tool PMonConfig.exe from the Aloaha PDF Suite Directory. In the upper drop down list you choose the printer to be configured. In the lower part of the GUI you configure the Autoprint feature.

Can I digitally sign PDF Files when Aloaha is installed in server mode?

Yes, you need to reconfigure the pdfprint service to logon as user and you need to choose the user owning the certificate. Please note that the digital signature laws in most countries state that a electronic signature must be unique to the person using it. Offering a solution which digitally signs fully automatically on a server would be against these laws.

I would like to digitally sign my generated PDF Files but I do not have a Digital Signature. Where do I get one?

If you need to sign your documents for legal reasons it is suggested to buy a digital certificate at accredited companies like Verisign. In case you need the signature just to make sure that nobody tempts with your PDF Files or for testing you can use our self issueing service at <http://certserv.wrocklage.de/certsrv/>. We are able to issue non accredited digital signatures for free. You could also install your own Certificate Authority. A howto can be downloaded.

Can I make automatic a hardcopy of every PDF I generate?

Yes, thats possible. You find closer information in chapter Autoprint of this manual.

Why is everybody nowadays using PDF Documents?

- PDF Documents preserve the look and integrity of your original documents.
- PDF files look exactly like the original pages and fulfill requirements for electronic filing and document security.
- PDF file can be signed digitally to be a legally binding document.

Why is PDF that important for Lawyers?

- PDF is used for more secure document exchange. You can password-protect PDF files to prevent unauthorized viewing and altering, while also enabling authorized reviewers to use intuitive commenting and editing tools.
- PDF Files can be signed with your digital certificate to be a legally binding document like a normal signature on paper. Click here for the EU Directive 31999L0093 or check the Uniform Electronic Transaction Act.
- Today, PDF is the standard, secure format for the electronic submission for electronic case filing in U.S. federal courts.

Is it possible to monitor more than one printer at a time?

Yes, Aloaha PDF Suite is able to monitor all printers on your system. Please read our article "How to retire your printer" for further details.

Is it possible to monitor more than one printer at a time? Yes, Aloaha PDF Suite is able to monitor all printers on your system. Please read our article for further details.

Is it possible to convert automatically all incoming faxes to PDF and/or route them to a mailbox or mail enabled public folder?

Yes, Aloaha PDF Suite can monitor ANY printer queue and does not need its own printer driver. Furthermore it is designed to be able to work in batchmode. Read more about these features in our article "FAX 2 PDF"

Does Aloaha PDF Suite support ?

Aloaha PDF Suite does not make any difference between windows applications. Everything what can be printed can be converted. Please have a look at created with QuarkXPress.

Aloaha PDF Manual (368,11 KB)

Please visit also our Support Pages!

Index

- A -

Aloaha batch / mass signature 60
Aloaha PDF Suite Enterprise SDK 7
Aloaha PDF Suite Light 7
Aloaha PDF Suite Pro 7
Aloaha PDF Suite Server 7
archive every printout as PDF 66
Automation command 55
Autoprint folder 57

- C -

Configuration 16
Configuration "Attachments" 25
Configuration "digital Signature" 21, 41
Configuration "e-mail" 19
Configuration "licensing" 25
Configuration "PDF" 17
Configuration "Printer Settings" 20
Configuration "Save" 18
Configuration "Signature settings" 23, 43
Configuration as Windows service 50
Configuration from master 26
Controlled folder 56
CPU Priority set 61

- D -

Demoverison 7, 11
Digitally sign 39
Dropmail folder 57

- F -

FAQ 69
Files sort 62
Fitting of the page size 35

- I -

Info 26
Installation 11
Introduction 5

- L -

Language.ini 68
Licence play in 15

- M -

monitor all printers 64

- N -

note paper 30

- O -

optical settings 43
Overview 8, 27

- P -

PDF Editor 67
PDF Scripting 32
PDF signing 46

- R -

Registry2ini 63

- S -

Server mode 50
Settings 41
Signature check 48
Supported card readers 45
Supported Smart Cards 45

- T -

To sign folder 58
Translation 68
Tray menu 38, 53

- U -

Usage 27
Userlanguage 38

- V -

Versions 7